



ATTACHMENT 4

Hazardous Materials Technical Report

Glassboro-Camden Line EIS
November 2020

Prepared by:



Prepared for:



Project information contained in this document, including estimated limits of disturbance that could result with construction or operation of the proposed GCL, is based on conceptual design parameters that represent a reasonably conservative basis for conducting environmental analyses. As the proposed GCL is advanced through preliminary engineering and construction, efforts will continue to be made to further refine the design and minimize the project footprint. These refinements may result in the potential to avoid and further reduce the adverse effects outlined in this document and as described within this Environmental Impact Statement.

Contents

1	INTRODUCTION	1
1.1	Project Description.....	1
1.2	Project History	1
2	PRINCIPAL CONCLUSIONS	2
3	EDR REPORT	3
4	NJDEP DATABASES	6
5	FINDINGS	6

Figures

Figure 1:	Known or Potential Areas of Environmental Concern	12
-----------	---	----

Tables

Table 1:	Known or Potential Contaminated Sites Expected to be Impacted by the Proposed Alignment ..	8
----------	--	---

Appendices

Appendix 4-A: Complete Table of Known or Potential Contaminated Sites Expected to be Impacted by the Proposed Alignment

Appendix 4-B: EDR Report (Available Upon Request)

Acronyms

AIRS	Aerometric Information Retrieval System
AOC	Areas of Concern
BEM	BEM Systems, Inc
CEA	Groundwater Classification Exception Areas
CERCLA	Comprehensive Environmental Response, Compensation and Liability Act
CERCLIS	Comprehensive Environmental Response, Compensation and Liability Information System
CFR	Code of Federal Regulations
CORRACTS	Corrective Action Report
DER	Deed Notice/ Restriction
EDR	Environmental Data Resources, Inc.
EIS	Environmental Impact Statement
EPCRA	Emergency Planning and Community Right-to-Know Act
EO	Executive Order
ERNS	Emergency Response Notification System
FEIS	Final Environmental Impact Statement
FINDS	Facility Index System
FIFRA	Federal Insecticide Fungicide Rodenticide Act
FTA	Federal Transit Administration
FTTS	FIFRA/ TSCA Tracking System

GCL	Glassboro-Camden Line
GIS	Geographic Information System
GWQS	Groundwater Quality Standard
HMIRS	Hazardous Materials Incident Report System
KCS	Known Contaminated Site
KCSL	Known Contaminated Site List
LCP	Linear Construction Project
LOD	Limits of Disturbance
LSRP	Licensed Site Remediation Professional
LUST	Leaking Underground Storage Tank
MLTS	Material Licensing Tracking System
MMP	Materials Management Plan
NCP	National Oil and Hazardous Substances Pollution Contingency Plan
NEPA	National Environmental Policy Act
NFRAP	“No Further Remedial Action Planned”
NJDEP	New Jersey Department of Environmental Protection
NJPDES	New Jersey Pollutant Discharge Elimination System
NJPF	New Jersey Publicly Funded Site Cleanup Status Report
N.J.S.A.	New Jersey Statutes Annotated
NPL	National Priority List (Superfund sites)
NRDCSRS	Non-Residential Direct Contact Soil Remediation Standard
OPRA	Open Public Records Act
PADS	PCB Activity Database System
PCB	Polychlorinated Biphenyl
PCS	Permit Compliance System
RAATS	RCRA Administration Action Tracking System
RCRA	Resource Conservation and Recovery Act
RCRIS-LQG	Resource Conservation and Recovery Information System-Large Quantity Generator
RCRIS-TSD	Resource Conservation and Recovery Information Treatment Storage and Disposal
RCRIS-SQG	Resource Conservation and Recovery Information System-Small Quantity Generator
RDCSRS	Residential Direct Contact Soil Remediation Standard
ROD	Record of Decision
SARA	Superfund Amendments and Reauthorization Act
SHWS	State Hazardous Waste Site
SRRA	Site Remediation Reform Act
SSTS	Section 7 Tracking System
SWF/ LF	Solid Waste Facilities/ Landfill Sites
TRIS	Toxic Chemical Release Inventory System
TSCA	Toxic Substance Control Act
EPA	United States Environmental Protection Agency
UST	Underground Storage Tank
VOC	Volatile Organic Compound

1 INTRODUCTION

This document presents a summary of the known or potential environmental areas of concern (AOCs) identified within a 300-foot radius from the proposed limits of disturbance (LOD) for the Glassboro-Camden Line (GCL) alignment. The proposed GCL project is currently in the planning and conceptual design phase, during which the alignment and facilities are subject to change based on design and location of project elements. Based on the final design criteria, the final list of known or potential AOCs that could be impacted by the proposed project can be generated.

1.1 Project Description

The Glassboro-Camden Line (“the proposed GCL” or “the proposed project”) is a proposed 18-mile expansion of transit service in Southern New Jersey that would traverse eleven communities between the City of Camden (Camden County) and the Borough of Glassboro (Gloucester County). These communities, listed from north to south, include the following within Camden County - Camden City, Gloucester City, and Brooklawn Borough - and the following communities within Gloucester County - Westville Borough, Woodbury City, Woodbury Heights Borough, Deptford Township, Wenonah Borough, Mantua Township, Pitman Borough, and Glassboro Borough.

The proposed GCL would restore passenger rail service primarily along an existing Conrail freight corridor using light rail vehicles similar to the NJ TRANSIT River LINE. In general, this new transit service would operate at-grade, but some portions would be grade-separated over existing roads and waterways. The proposed GCL would run on new dedicated tracks and/or be separated from the freight trains temporally, allowing the current Conrail freight operations to continue. The proposed project would provide 14 new transit stations, including five walk-up stations and nine proposed park-and-ride facilities, and two vehicle maintenance facilities (VMF). The proposed GCL would provide connections (in Camden) to Philadelphia, Trenton, and other points in the region via the PATCO Speedline, the NJ TRANSIT River LINE, and NJ TRANSIT bus routes.

1.2 Project History

The proposed project began in 2003 and the National Environmental Policy Act (NEPA) Environmental Impact Study (EIS) began in 2010 under the Federal Transit Administration (FTA) New Starts Program and continued until 2014 when the project was put on hold at FTA’s request. In January 2014, BEM Systems, Inc. (BEM) prepared a summary document of known or potential environmental AOCs for the proposed GCL alignment. The project restarted in 2017 with NJ Transit Corporation (NJ TRANSIT) continuing to provide funding and the Delaware River Port Authority (DRPA) providing project management oversight. A decision by the state has been made to move forward under the state Executive Order (EO) 215 process. BEM received the proposed LOD for the GCL project alignment from STV, Inc. on December 1, 2017. An Environmental Data Resources, Inc. (EDR) DataMap Environmental Atlas was prepared on December 29, 2017 with a 300-foot radius around the LOD. The EDR DataMap Environmental Atlas searches various environmental databases for known or potential contaminated sites to identify sites within the limits of the proposed project alignment. The LOD and EDR results were imported into ArcMap, a Geographic Information System (GIS) mapping software program to visually present the data. A radius of 300 feet was

created around the LOD to ensure that any known or potential AOCs which could impact the proposed project were included in this report. The New Jersey Department of Environmental Protection (NJDEP) GIS layers for Known Contaminated Sites (KCSs), Groundwater Classification Exception Areas (CEAs) and Deed Notice for institutional and engineering controls for groundwater and soil above the NJDEP Groundwater Quality Standards (GWQS) for 2017, Non-Residential Direct Contact Soil Remediation Standards (NRDCSRS) for 2017, and Residential Direct Contact Soil Remediation Standards (RDCSRS) for 2017 locations were also added to the GIS map. Figures 1a through 1t, “Known or Potential Areas of Environmental Concern,” depicts the sites identified in the EDR report, CEAs, KCS, and Deed Notices in the 300-foot radius area.

The EDR DataMap Environmental Atlas report and NJDEP identify a total of three hundred and eighty (380) sites within the 300-foot radius area. The number of sites identified in 2013 was significantly less than the number identified in 2017 due a smaller LOD. In addition, the EDR reports now search more environmental databases, leading to a larger number of sites being identified. Table 1, “Known or Potential Contaminated Sites Expected to be Impacted by the Proposed Alignment,” identifies thirty-four (34) known or potential contaminated sites that may be impacted by the proposed alignment, station stops, “park-and-rides,” and other facilities due to the proximity to the LOD. The full list of the 380 sites is included as Appendix 4-A, “Complete Table of Known or Potential Contaminated Sites Expected to be Impacted by the Proposed Alignment.” The EDR report is included in Appendix 4-B, “EDR Report” (available upon request)

2 PRINCIPAL CONCLUSIONS

Based on the findings of the EDR report and NJDEP databases, there are 380 AOCs within 300 feet of the LOD. Many of these sites are at the outer boundaries of the 300 foot radius and most likely would not be impacted by or during construction of the GCL project. However, thirty-four (34) sites were identified on or adjacent to the proposed LOD and may be impacted by construction efforts. These sites would require further investigation prior to construction in order to ensure contamination would not be encountered. An Open Public Records Act (OPRA) request may be submitted to NJDEP for the sites that may be impacted during construction efforts. The information gathered during OPRA file review would provide a better understanding of the sites and whether sampling or further investigation would be necessary prior to construction.

It is recognized that the environmental cases and conditions in proximity to the project corridor changes over time. As such, the identified conditions may be slightly different at the time of construction. In any event, the GCL project would be considered a Linear Construction Project (LCP) in accordance with NJDEP Linear Construction Technical Guidance (dated January 2012) and would be assigned a Licensed Site Remediation Professional (LSRP) for the project. The LSRP would ensure compliance with NJDEP’s Site Remediation Reform Act (SRRRA), N.J.S.A. 58:10C-1 et seq. requirements, including the Technical Requirements for Site Remediation (TRSR) found at N.J.A.C. 7:26E. A Materials Management Plan (MMP) would be prepared to handle contaminated media during construction, site restoration to prevent exposure to remaining contamination, and after construction the LSRP would submit a final report to NJDEP within 180 days of completion to document that the rules and guidance were followed.

3 EDR REPORT

The EDR report included reviews of the following databases:

- United States Environmental Protection Agency (EPA) National Priority List (NPL) – NPL (Superfund) is a subset of the Comprehensive Environmental Response, Compensation, and Liability Information System (CERCLIS) and identifies sites for priority cleanup under the Superfund Program.
- Proposed NPL – Proposed sites for inclusion on EPA National Priority List.
- CONSENT – Superfund Comprehensive Environmental Response, Compensation and Liability Act (CERCLA) Consent Decrees are major legal settlements that establish responsibility and standards for cleanup at NPL (Superfund) sites. These decrees are released periodically by United States District Courts after settlement by parties to litigation matters.
- ROD – Records of Decision (ROD) documents mandate a permanent remedy at an NPL (Superfund) site containing technical and health information to aid in the cleanup.
- Delisted NPL – National Priority List Deletions. The National Oil and Hazardous Substances Pollution Contingency Plan (NCP) establishes the criteria that the EPA uses to delete sites from the NPL. In accordance with 40 Code of Federal Regulations (CFR) § 300.425(e), sites may be deleted from the NPL where no further response is appropriate.
- MINES – Mines Master Index File. The source of this database is the Department of Labor, Mine Safety and Health Administration.
- NPL Liens – Federal Superfund Liens. Under the authority granted by CERCLA of 1980, the EPA has the authority to file liens against real property in order to recover remedial action expenditures or when the property owner receives notification of potential liability. EPA compiles a listing of filed notices of Superfund Liens.
- CERCLIS – CERCLIS contains data on potentially hazardous waste sites that have been reported to the EPA by states, municipalities, private companies, and private persons, pursuant to Section 103 of CERCLA. CERCLIS contains sites that are either proposed to be or are on the NPL, and sites that are in the screening and assessment phases for possible inclusion on the NPL.
- CERCLIS-NFRAP – As of February 1995, CERCLIS sites designated "No Further Remedial Action Planned" (NFRAP) have been removed from CERCLIS. NFRAP sites may be sites where, following an initial investigation, no contamination was found, contamination was removed quickly without the need for the site to be placed on the NPL, or the contamination was not serious enough to require Federal Superfund Action or NPL consideration.
- CORRACTS – Corrective Action Report (CORRACTS) is a list of handlers with Resource Conservation and Recovery Act (RCRA) Corrective Action Activity. These reports show, which nationally defined corrective action core events, have occurred for every handler that has had corrective action activity.
- RCRIS-TSD – Resource Conservation and Recovery Information System – Treatment, Storage, and Disposal (RCRIS-TSD). The Resource Conservation and Recovery Act database includes selected

information on sites that generate, store, treat, or dispose of hazardous waste as defined by the Act. The source of this database is the EPA.

- RCRIS-LQG –RCRIS– Large Quantity Generator (RCRIS-LQG). The RCRA database includes selected information on sites that generate, store, treat, or dispose of hazardous waste as defined by the Act. A site is considered a large quantity generator if the site generates more than 2,200 pounds (1,000 kilograms) of hazardous waste or more than 2.2 pounds (1 kilogram) of acute hazardous waste per calendar month. The source of this database is the EPA.
- RCRIS-SQG – RCRIS – Small Quantity Generator (RCRIS-SQG). The RCRA database includes selected information on sites that generate, store, treat, or dispose of hazardous waste as defined by the Act. A site is considered a small quantity generator if the site generates between 220 pounds (100 kilograms) and 2,200 pounds (1,000 kilograms) of hazardous waste per calendar month. The source of this database is the EPA.
- ERNS – The Emergency Response Notification System (ERNS) records and stores information on reported releases of oil and hazardous substances. The source of this database is the EPA.
- FINDS – The Facility Index System (FINDS) contains both facility information and "pointers" to other sources of information that contain more detail. These include: RCRIS; Permit Compliance System (PCS); Aerometric Information Retrieval System (AIRS); Federal Insecticide Fungicide Rodenticide Act (FIFRA) and Toxic Substances Control Act (TSCA) Tracking System (FTTS);
- HMIRS – The Hazardous Materials Incident Report System (HMIRS) contains hazardous material spill incidents reported to the Department of Transportation. The source of this database is the EPA.
- MLTS – The Material Licensing Tracking System (MLTS) is maintained by the Nuclear Regulatory Commission and contains a list of approximately 8,100 sites, which possess or use radioactive materials.
- PADS – The polychlorinated biphenyl (PCB) Activity Database System (PADS) identifies generators, transporters, commercial storers, and/or brokers and disposers of PCBs who are required to notify the EPA of such activities. The source of this database is the EPA.
- RAATS – The RCRA Administration Action Tracking System (RAATS) contains records based on enforcement actions issued under RCRA and pertaining to major violators. It includes administrative and civil actions brought by the EPA. The source of this database is the EPA.
- TRIS – The Toxic Chemical Release Inventory System (TRIS) identifies facilities that release toxic chemicals to the air, water, and land in reportable quantities under Superfund Amendments and Reauthorization Act (SARA) Title III, Section 313. The source of this database is the EPA.
- TSCA – TSCA identifies manufacturers and importers of chemical substances included on the TSCA Chemical Substance Inventory list. It includes data on the production volume of these substances by plant site. The EPA has no current plan to update and/or re-issue this database.
- SSTS – The Section 7 Tracking System (SSTS) of FIFRA, as amended (92 Stat. 829) requires all registered pesticide-producing establishments to submit a report to the EPA by March 1st of each year. Each

establishment must report the types and amounts of pesticides, active ingredients, and devices being produced, and those having been produced and sold or distributed in the past year.

- FTTS – FTTS tracks administrative cases and pesticide enforcement actions and compliance activities related to FIFRA, TSCA, and EPCRA (Emergency Planning and Community Right-to-Know Act) over the previous five years.
- SHWS – State Hazardous Waste Site (SHWS). The Known Contaminated Site List (KCSL) in New Jersey includes sites under the purview of the Site Remediation Program that have contamination present at levels greater than the applicable cleanup criteria for soil and/or groundwater standards. This report includes sites being remediated under all of the various regulatory programs administered by the Site Remediation Program.
- SWF/LF – The Solid Waste Facilities/Landfill Sites (SWF/LF) records typically contain an inventory of solid waste disposal facilities or landfills in a particular state. Depending on the state, these may be active or inactive facilities or open dumps that failed to meet the RCRA Subtitle D Section 4004 criteria for solid waste landfills or disposal sites. The data comes from the New Jersey Department of Environmental Protection's (NJDEP's) Solid Waste Facility Directory.
- LUST – The Leaking Underground Storage Tank (LUST) Incident Reports contain an inventory of reported leaking underground storage tank incidents. The data comes from the NJDEP's Incident Reports.
- UST – The Underground Storage Tank (UST) database contains registered USTs. USTs are regulated under Subtitle I of the RCRA and must be registered with the state department responsible for administering the UST program. The data comes from the NJDEP's UST data.
- NJ Major Facilities – "Major Facility" means all facilities located on one or more contiguous or adjacent properties owned or operated by the same person, having total combined storage capacity of: 1) 20,000 gallons or more for hazardous substances other than petroleum or petroleum products; 2) 200,000 gallons or more for hazardous substances of all kinds.
- NJ Spills – All hazardous material known or unknown spills to the ground reported to the NJDEP's Environmental Action Line.
- NJ Release – All hazardous material release initial notification information is reported to the NJDEP's Environmental Action Line.
- NJ PF – Publicly Funded Cleanups Site Status Report. This report focuses on publicly funded cleanups and features progress achieved and underway at all sites that are being addressed by the NJDEP with public funds.
- NJ Chrome – A NJDEP listing of all known chromate chemical production waste sites.
- NJPDES – The New Jersey Pollutant Discharge Elimination System (NJPDES) contains the names, addresses, and other information of all permitted NJPDES dischargers.

- US Brownfields – Brownfields are identified as former or current commercial or industrial use sites that are presently vacant or underutilized, on which there is suspected to have been a discharge of a contamination to the soil or groundwater at concentrations greater than the applicable cleanup criteria.

4 NJDEP DATABASES

In addition to the EDR report, BEM also searched the following NJDEP databases:

- Groundwater Classification Exception Areas (CEAs) – A Groundwater CEA is a designation established when groundwater in an area does not meet groundwater standards. It restricts use of groundwater in the area until NJDEP Groundwater Quality Standards (GWQS) 2017 are met.
- Deed Notice/ Restriction (DER) – A Deed Notice/ Restriction (DER) is a notice that is added to the title of a property when there is contamination remaining above the NJDEP’s Non-Residential Direct Contact Soil Remediation Standards (NRDCSRS) 2017 and Residential Direct Contact Soil Remediation Standards (RDCSRS) 2017.
- Known Contaminated Site List (KCSL) – KCSL is produced by NJDEP for sites affected by hazardous substances. The KCSL in New Jersey report is a municipal listing of sites where contamination of soil and/or ground water is confirmed at levels greater than the applicable cleanup criteria or standards. Remedial activities are underway or required at the sites with an on-site source(s) of contamination and at locations where the source(s) of contamination is unknown. Sites with completed remedial work that require engineering and/or institutional controls have reporting measures in place to ensure the effectiveness of past actions, and some include maintenance and/or monitoring.

5 FINDINGS

Based on the findings of the EDR report and NJDEP databases, there are 380 AOCs within 300 feet of the LOD. Many of these sites are at the outer boundaries of the 300-foot radius and most likely would not be impacted by or during construction of the GCL project. However, thirty-four (34) sites were identified on or adjacent to the proposed LOD and may be impacted by construction efforts. These sites were cross-referenced with the information provided from the environmental databases. Table 1, “Known or Potential Contaminated Sites Expected to be Impacted by the Proposed Alignment,” lists the sites within the LOD and identifies the site address and rationale for listing the AOC as having the potential to be impacted by construction. The thirty-four (34) sites listed in Table 1, “Known or Potential Contaminated Sites Expected to be Impacted by the Proposed Alignment,” would require further investigation prior to construction in order to confirm contamination would not be encountered. An Open Public Records Act (OPRA) request may be submitted to NJDEP for the sites that may be impacted during construction efforts. The information gathered during OPRA file review would provide a better understanding of the sites and whether sampling or further investigation would be necessary prior to construction. Appendix 4- A, “Complete Table of Known or Potential Contaminated Sites Expected to be Impacted by the Proposed Alignment,” includes all 380 sites identified in the database searches within the 300-foot radius of the LOD.

Table 1, “Known or Potential Contaminated Sites Expected to be Impacted by the Proposed Alignment,” above identifies thirty-four (34) sites on or adjacent to the proposed LOD and that may be impacted by construction efforts. There are five (5) CEAS, ten (10) active KCSL sites but two (2) are pending assignment of LSRPs, one (1) Deed Notice and thirty-one (31) EDR identified sites that overlap with the LOD and may be impacted by construction efforts. The sites identified in Table 1, “Known or Potential Contaminated Sites Expected to be Impacted by the Proposed Alignment,” do not include all sites within or adjacent to the LOD but only those that have the potential to be impacted by construction. Further investigation of these sites would be necessary in order to understand the depth of contamination and the contaminants of concern to make certain contamination is not encountered, or that mitigation measures are in place.

Appendix 4-A, “Complete Table of Known or Potential Contaminated Sites Expected to be Impacted by the Proposed Alignment,” lists all of the sites identified during the analysis of the EDR and NJDEP databases, including those listed above. Figures 1a through 1t, “Known or Potential Areas of Environmental Concern,” identifies sites within the LOD and sites within a 300 foot radius around the LOD. Within the 300 foot radius, there are thirteen (13) CEAS, thirty-two (32) KCSL sites, and four (4) Deed Notice sites. There are a total of three hundred and eighty (380) sites identified within the 300 foot radius area. The sites within the 300-foot radius not included in Table 1, “Known or Potential Contaminated Sites Expected to be Impacted by the Proposed Alignment,” are sites included in the EDR report and NJDEP databases that are would have little to no impact to project activities such as historic cleaners, NJ historic HWS, NJ UST, NJ Spill, and NJ Release reports of small quantities.

The GCL project would be assigned as a Linear Construction Project (LCP) in accordance with NJDEP Linear Construction Technical Guidance (dated January 2012) by completing the Initial LCP Notification Form and assigning a Licensed Site Remediation Professional (LSRP) for the project. The LSRP would ensure compliance with NJDEP’s SRRA, N.J.S.A. 58:10C-1 et seq. requirements, including the TRSR N.J.A.C. 7:26E. A Materials Management Plan (MMP) would be prepared to handle contaminated media during construction, site restoration to prevent exposure to remaining contamination, and after construction the LSRP would submit a final report to NJDEP within 180 days of construction completion to document that the rules and guidance were followed.

Table 1: Known or Potential Contaminated Sites Expected to be Impacted by the Proposed Alignment

Fig. ID	Facility	Site Address/ Block and Lot	Rational for AOC Listing
7, 11, 21, 28	NJ TRANSIT River LINE	Various Locations Camden, NJ	There is a Deed Notice in effect at this site. The project is closed under the Linear Construction Guidance for the historic fill administrative Deed Notice without Remedial Action Permit for soil. NJDEP issued an NFA for NJ TRANSIT River LINE (Formerly Southern New Jersey Light Rail Transit System)
18	Rutgers- Camden Nursing and Science Bldg.	530 Federal St Camden City, NJ	This site is listed in the EDR NPDES and NJEMS databases. It is also an active KCSL with an assigned LSRP for soil contamination. The Program Interest number is 723622.
27	Honeyford & Smith Engineering Inc./ JE Brenneman & Co/ WHCB Real Estate LTD Partnership	800 Hudson Sq., Camden, NJ	This site is listed in the EDR NJ Spill, NJEMS, NJ SHWS, NJ LUST, NJ UST, NJ Inst Control, NJ Brownfields, NJ GW Contaminated area and RCRA NonGen/NLR databases. The Program Interest number is 005146. The site id for NJ SHWS is 43279.
36	Collins Harold M	591 Mickle Ave Camden, NJ	This site is listed in the EDR Historical Auto Stations database under environmental id 1009121082.
52	Wintheim Murray	549 Haddon Ave Camden, NJ	This site is listed in the EDR Historical Auto Stations database environmental id number 1009118691.
67	Vacant Lots	825-827-829 Chestnut Camden, NJ	This site is listed in the EDR NJ Release database with case id 97-8-6-1744-44. Illegal dumping was reported onsite and an oil like substance observed.
85	Clement Coverall Company Former/ Van Hook Street Site	619 Carl Miller Blvd Camden, NJ	This site is listed under multiple databases and is an active KCSL site with an assigned LSRP currently under remedial investigation, listed under program interest number 003460. The other databases include SHWS, NJ LUST, NJ Brownfields, RCRA-TSDF and NJ Release.
100	Woodland Ave Drums	S 6th St Woodland Ave Camden, NJ	This site is an active KCSL site for soil contamination under program interest number 191111. The assignment of an LSRP is currently pending.
105	Simkins David	619 Morgan Blvd Camden, NJ	This site is listed in the EDR Historic Auto Station database, site id number 1009118710.
106	7th and Morgan Auto Repair Shop	693 Morgan St Camden, NJ	This site is listed in the EDR Historic Auto Station database, site id number 125178.
107	Camden Energy Res	600 Morgan Blvd Camden, NJ	This site is listed under multiple databases and is an active KCSL site, program with an LSRP under program interest number 622147. It is under the remedial action regulatory timeframe. The other databases include NJ Release, NJ Spills and Hist LUST.

Table 1: Known or Potential Contaminated Sites Expected to be Impacted by the Proposed Alignment (continued)

Fig. ID	Facility	Site Address/ Block and Lot	Rational for AOC Listing
109	Indco Inc.	511 Essex St Gloucester City, NJ	This site is listed under multiple databases and is an active KCSL site with an LSRP for groundwater contamination under the program interest number 023652. The EDR databases include FTTS, RCRA-LQG, NJEMS, ECHO, FINDS, NJ LUST, NJ Manifest and NJ Release.
124	Roadway	800 Cumberland St Gloucester City, NJ	This site is listed in the NJ release and NJ SPILL databases with case id 17490. It is described as being a release of antifreeze from a car.
130	S F Pedrick Const Co Inc	800 Market St Gloucester City, NJ	This site is listed under multiple databases including NJ UST, SHWS, Historic LUST and NJ Release from improper removal of a UST causing soil contamination with case id 95-02-14-1015.
171	First Presbyterian Church	305 Broadway Pitman, NJ	This site is listed in the EDR NJEMS database for groundwater contamination and is enrolled in the NJDEP Site Remediation Program under program interest number 032589. There is not an LSRP assigned to the case at this time.
173	CAMCO Paving	324 Broadway Westville, NJ	This site is listed in the EDR NJ Release database for release of solid waste and in NJ Spills for release of 20 to 30 gallons of oil with case number 90-03-21-1156.
184	Sunoco Gas Station	Rt 46 and Roosevelt Westville, NJ	This site is listed under EDR databases NJ Spills listed under environmental id number S102200910.
185	Wheelabrator	600 US 130 West Deptford, NJ	This site is listed under EDR databases NJ Spills and NJ Release under environmental id number S102227094.
199	Coastal Eagle Point Oil Co/ Texaco Eagle Point	Route 130 and Interstate 295 West Deptford, NJ	This site is listed under EDR databases NJ SWF/LF, NJ HIST LUST, NJ SWF/LF, NJPDES, FINDS, ECHO, NJ Release, NJ Spills with environmental id number U002155799 and has an active CEA onsite.
206	Woodbury Fuel & Supply Co	1090, 1096 and 1108 Broadway West Deptford, NJ	This site is listed in the NJ VCP, NJ UST, NJ Release, NJ GW Cont Areas, FINDS, NJ SHWS, NJ Inst Controls, NJ Brownfields, NJEMS databases. There is an active CEA onsite. It is also an active KCSL site with an assigned LSRP for groundwater contamination. It is associated with site remediation program interest number 002116.
208	Cornell and Company	1150 Broadway Westville, NJ	This site is an active KCSL site with an assigned LSRP for groundwater contamination and a CEA onsite associated with site remediation program interest number 010021.
218	Grove Realty Urban Renewal	Grove Ave West Deptford, NJ	This site is listed under EDR databases NJEMS, FINDS, with registry id number 110030786754, and NJ Spills with soil contamination noted.

Table 1: Known or Potential Contaminated Sites Expected to be Impacted by the Proposed Alignment (continued)

Fig. ID	Facility	Site Address/ Block and Lot	Rational for AOC Listing
243	Woodbury Coal Gas/ PSE&G Woodbury Gas Work Site	Maple and Laurel St, Woodbury, NJ	This site is listed under the EDR databases NJ SHWS, NJ Eng Controls, NJ Brownfields, NJEMS, RCRA NonGen/ NLR, NJ RGA HWS, EDR MGP, FINDS and ECHO. This site is an active KCSL site with an assigned LSRP under program interest number G000008366. There is also an active Deed Notice onsite.
248	Deptford Twp Mun Blvd	101 Cooper St Woodbury, NJ	This site is listed in the EDR NJ UST and NJ Spills databases with facility id 032325. Soil contamination was encountered during UST removal.
280	BPG Development Co	523 Chestnut Ave Woodbury Heights, NJ	This site is listed in the FINDS and NJEMS databases under the environmental id number 1010347171. It is the site of the potential maintenance yard for this proposed alignment.
284	Wenonah Boro/ Wenonah Boro DPW	2 W Maple S Wenonah, NJ	This site is listed in the EDR NJEMS, FINDS, NJ Hist LUST and RCRA NonGen/NLR databases under EPA id 110030806509.
293	Conrail Corp Trestle Replacement	UG Bridge 12.22, Deptford, NJ	This site is listed in the EDR NJEMS and FINDS databases but it a potential impact to the site due to the proximity to the project as it is part of Conrail. It is listed under site id 395461.
298	Sewell Train Station	780 Atlantic Ave Mantua, NJ	This site is listed in the VCP database registry id number 110032549829. It would be the location of the Sewell Station proposed in the project alignment.
341	Roadway	Rt 322 and Lehigh Ave, Glassboro, NJ	This site is listed in NJ Release database with case id 99-03-26-1030-04 but it has a potential to impact the site due to the proximity to the project.
343	Wawa	Rt 322 and Bowe Blvd Glassboro, NJ	This site is listed in the EDR NJ Spill database for a diesel fuel spill with case number 96-4-20-0853-39. It is located within the limit of disturbance.
349	Roadway	301 Mullica Hill Rd Glassboro, NJ	This site is listed in the EDR NJ Release database under case number 17-07-25-0911-37. It is located within the limit of disturbance.
350	Glassboro State College/ Rowan University	Rt 322/ Ellis St Glassboro, NJ	This site is listed in the EDR NJ Release database multiple times for release of liquid fuel, "Pure Weed Killer" under case number 86-11-20-2035, and soil contamination found during removal of a UST. It is also listed in the EDR NJ Spill, NJ Hist Cleaners and FINDS databases.
365	Owens-Illinois, Inc/ Anchor Hocking Packaging Co/ New Century Transp	70 Sewell St/ Glassboro Closure Plant Glassboro, NJ	This site is listed under multiple EDR databases including NJ UST, RGA HWS, SHWS, NJ INST Control, Brownfields, ISRA, AIRS, NJ GW Contam Areas, RCRA NonGen/ NLR, NJ HIST LUST, NY MANIFEST, NJ Spills, NJ Release, NJEMS, FINDS and ECHO. It is an active KCSL site with an assigned LSRP under program interest number 013624. It also has an active CEA onsite for benzene and volatile organic compounds (VOCs).

Table 1: Known or Potential Contaminated Sites Expected to be Impacted by the Proposed Alignment (continued)

Fig. ID	Facility	Site Address/ Block and Lot	Rational for AOC Listing
376	South Jersey Gas - Glassboro	Zane St and Union St Glassboro, NJ	This site is listed in the Manufactured Gas Plants database. It also has an active CEA onsite listed under program interest number 030709.

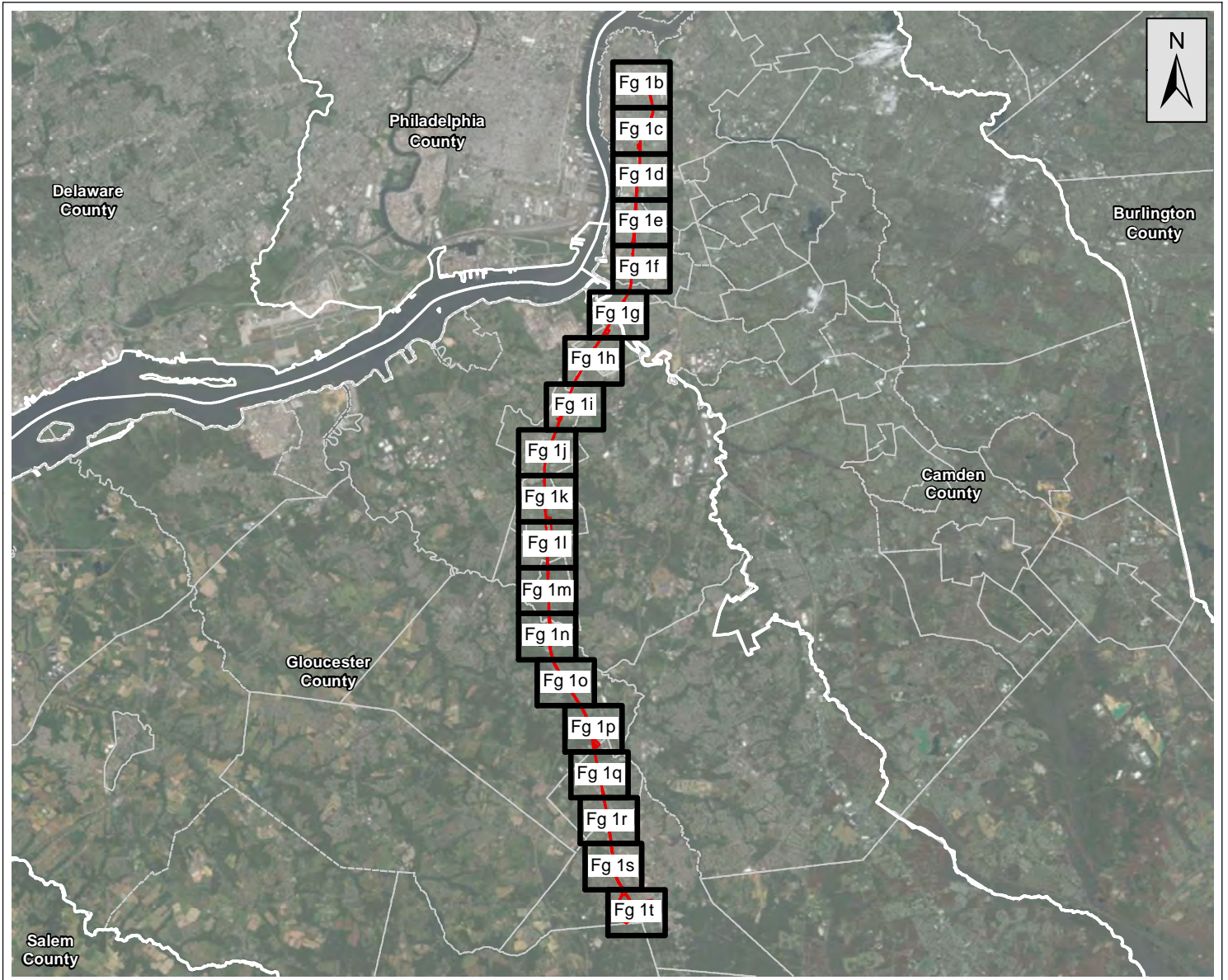


Figure 1a: Known or Potential Areas of Environmental Concern

Source: NJGID (2015); Esri, DigitalGlobe, GeoEye, Earthstar Geographics, CNES/Airbus DS, USDA, USGS, AEX, Getmapping, Aerogrid, IGN, IGP, swisstopo, and the GIS user community; GCL Project Team, 2020.



Legend


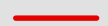

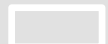
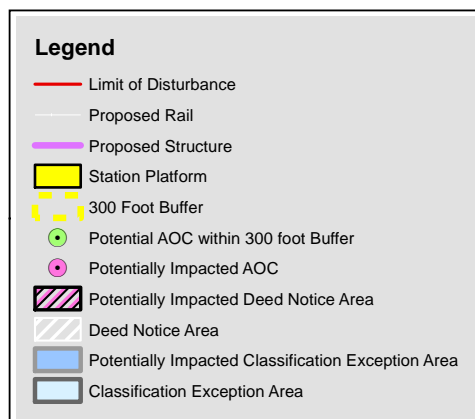
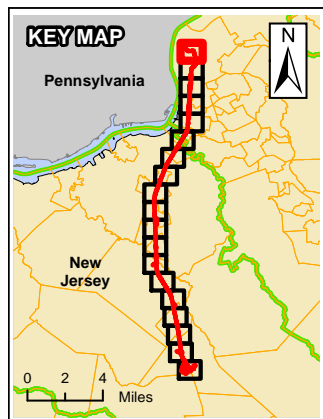
-  Map Book Page
-  Limit of Disturbance
-  Municipality Boundary
-  County Boundary





Figure 1b: Known or Potential Areas of Environmental Concern

Source: NJGID (2015); Esri, DigitalGlobe, GeoEye, Earthstar Geographics, CNES/Airbus DS, USDA, USGS, AEX, Getmapping, Aerogrid, IGN, IGP, swisstopo, and the GIS user community; GCL Project Team, 2020.



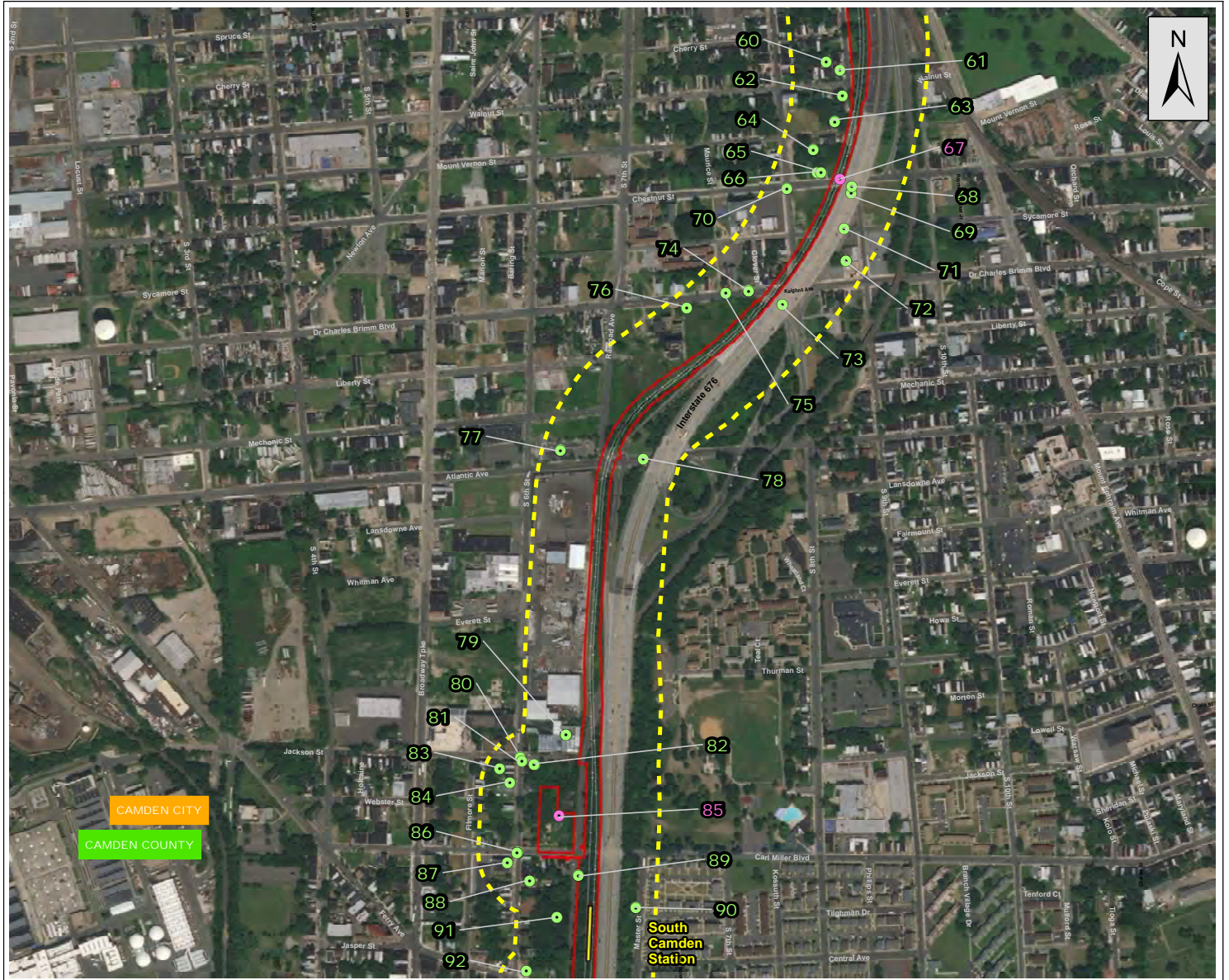
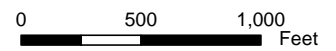
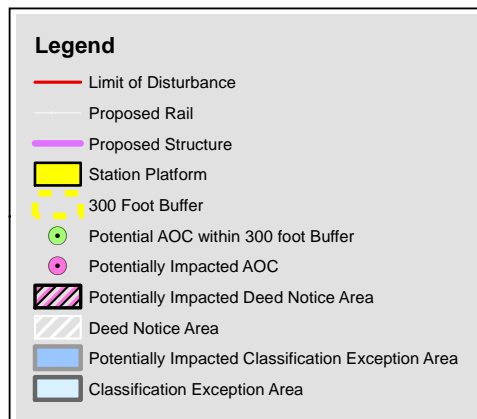
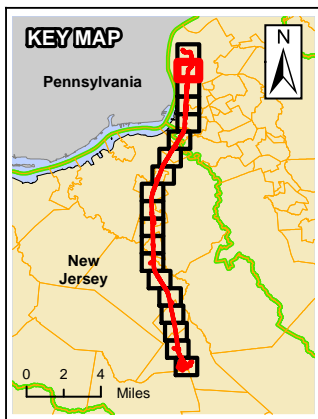


Figure 1c: Known or Potential Areas of Environmental Concern

Source: NJGID (2015); Esri, DigitalGlobe, GeoEye, Earthstar Geographics, CNES/Airbus DS, USDA, USGS, AEX, Getmapping, Aerogrid, IGN, IGP, swisstopo, and the GIS user community; GCL Project Team, 2020.



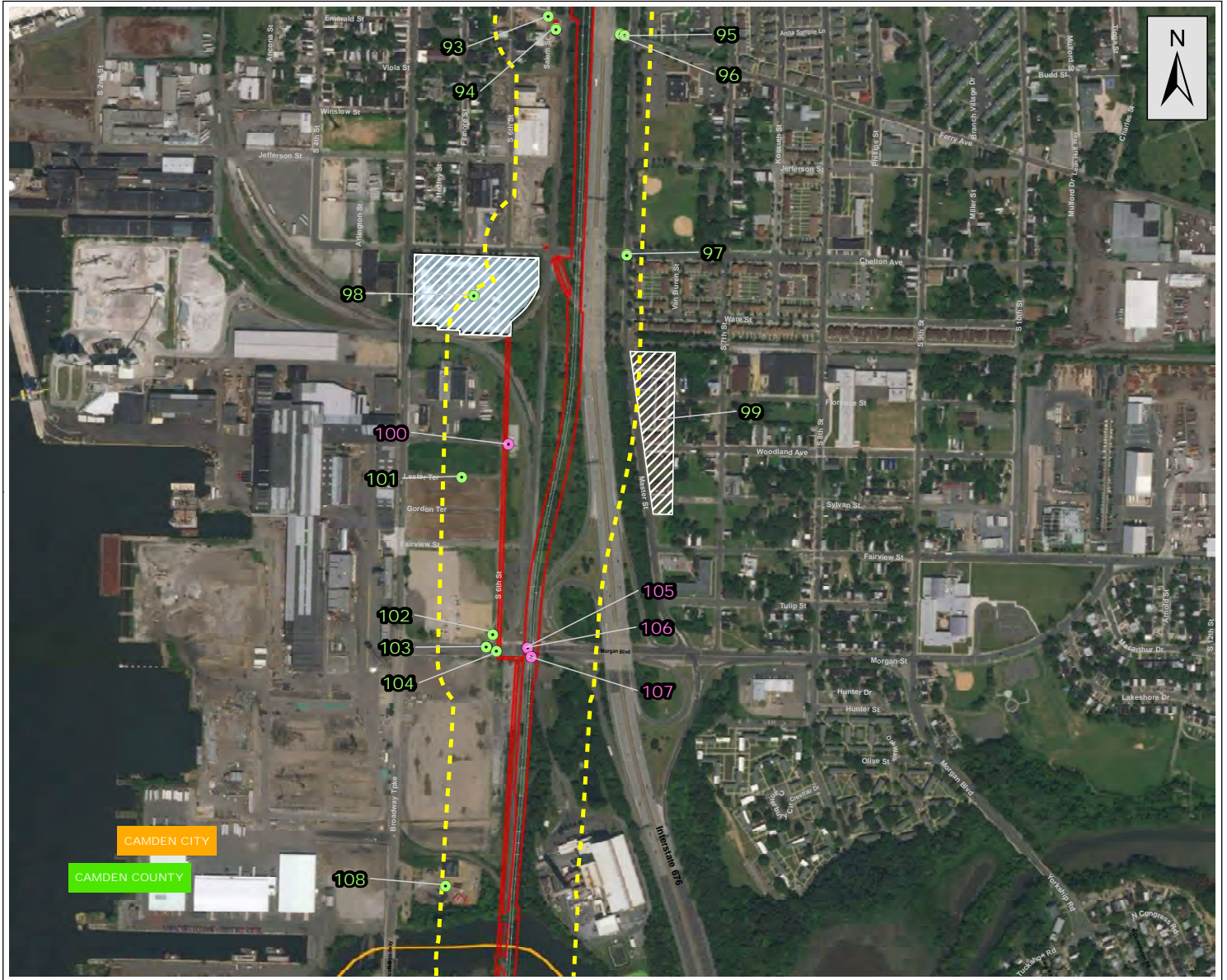
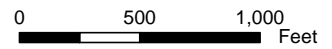
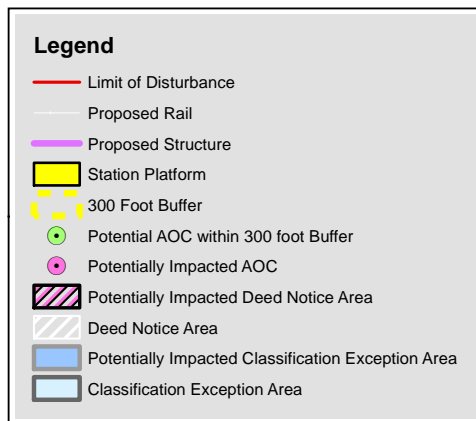
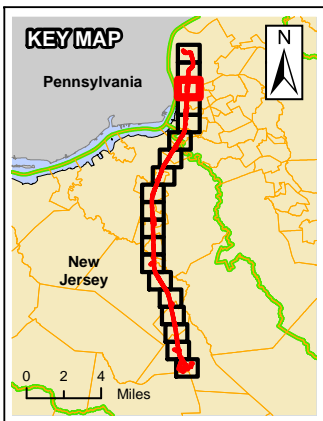


Figure 1d: Known or Potential Areas of Environmental Concern

Source: NJGID (2015); Esri, DigitalGlobe, GeoEye, Earthstar Geographics, CNES/Airbus DS, USDA, USGS, AEX, Getmapping, Aerogrid, IGN, IGP, swisstopo, and the GIS user community; GCL Project Team, 2020.



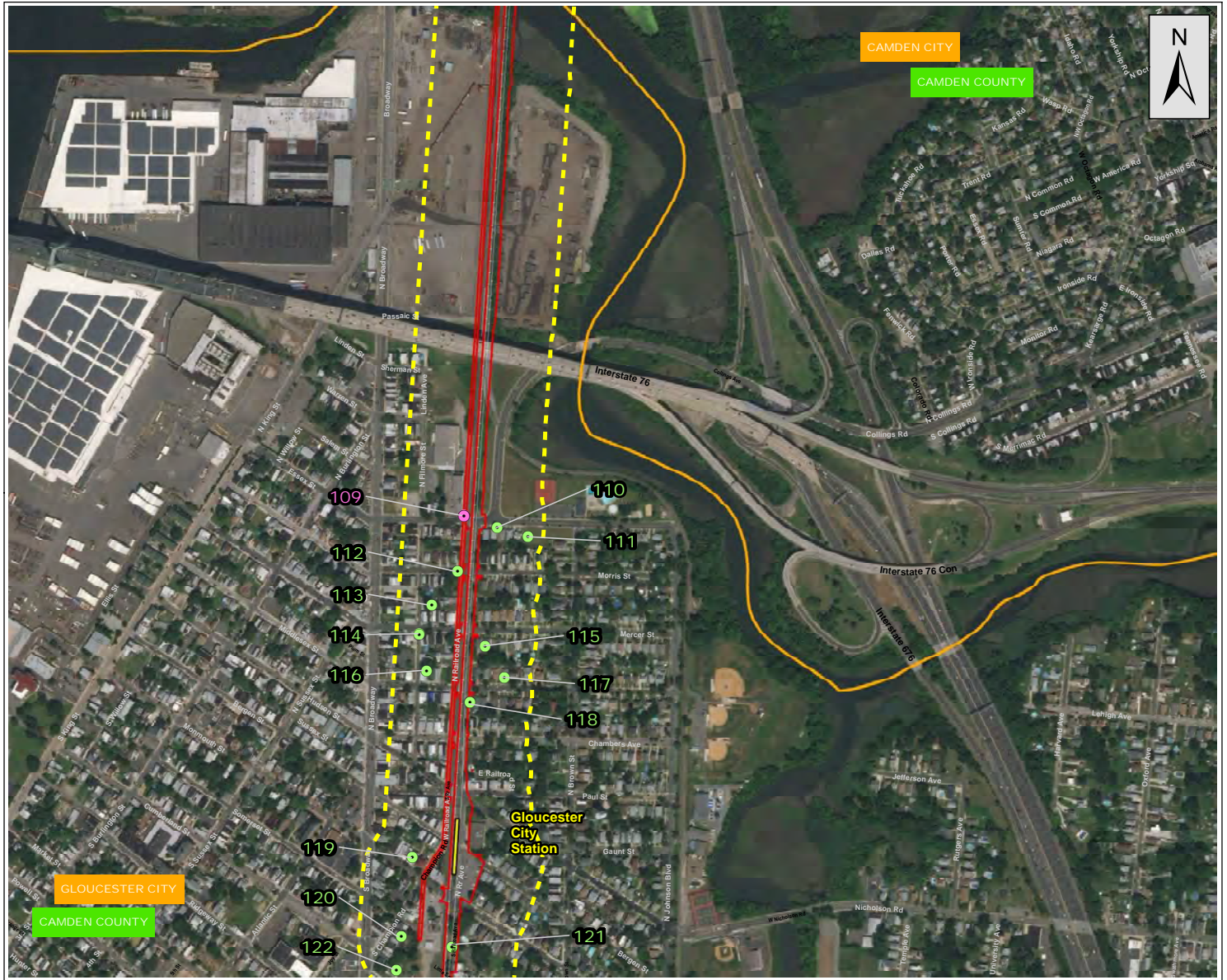
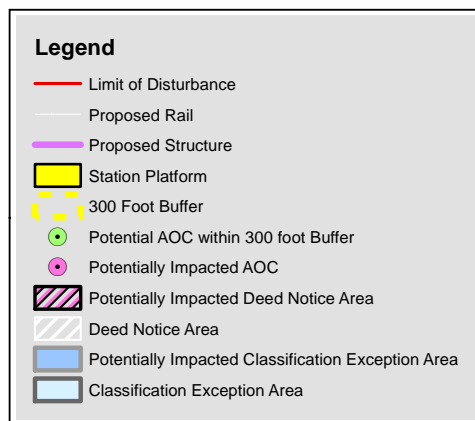
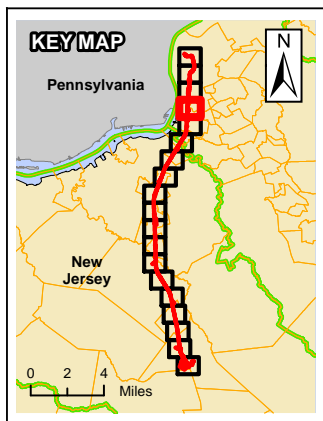


Figure 1e: Known or Potential Areas of Environmental Concern

Source: NJGID (2015); Esri, DigitalGlobe, GeoEye, Earthstar Geographics, CNES/Airbus DS, USDA, USGS, AEX, Getmapping, Aerogrid, IGN, IGP, swisstopo, and the GIS user community; GCL Project Team, 2020.



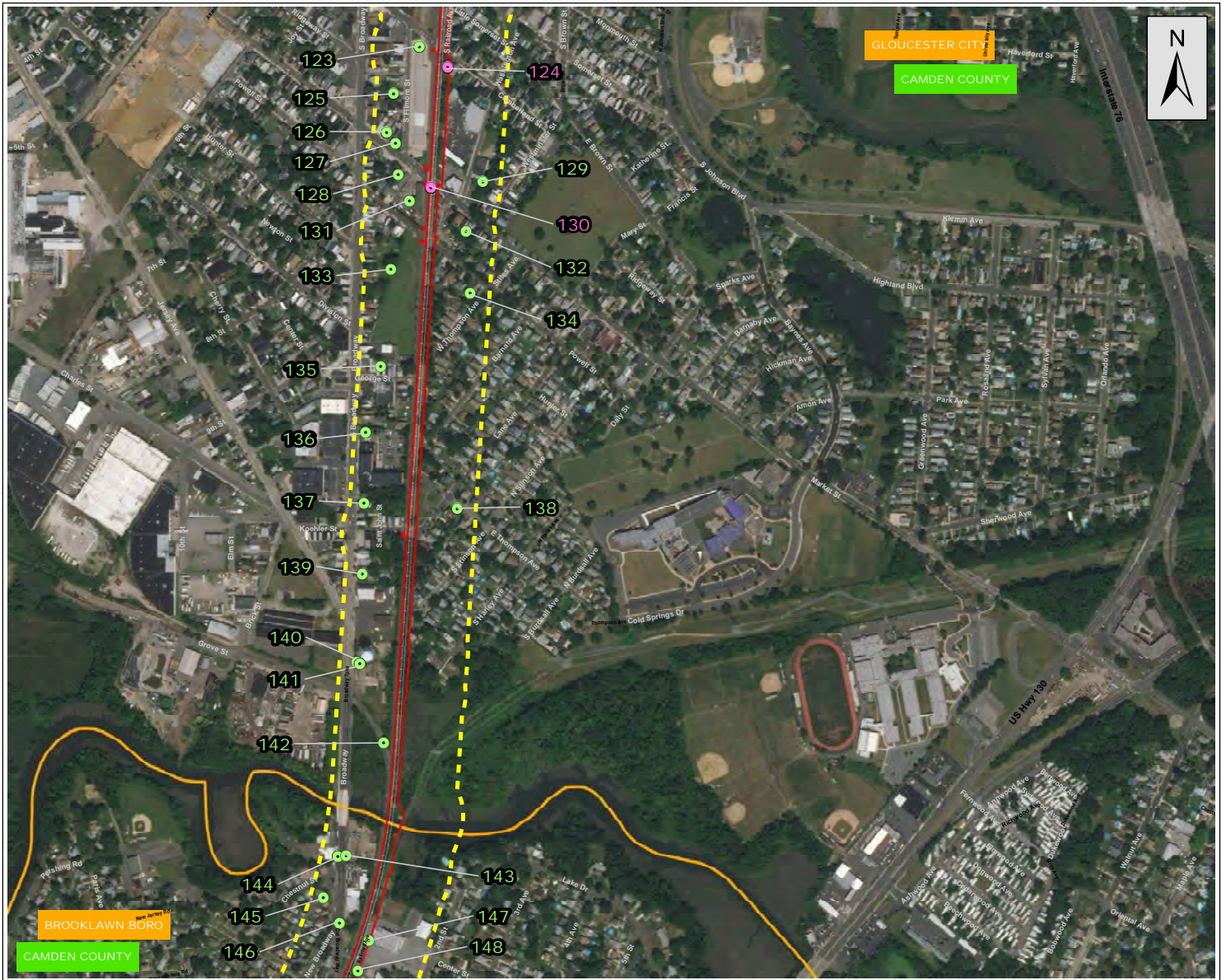


Figure 1f: Known or Potential Areas of Environmental Concern

Source: NJGID (2015); Esri, DigitalGlobe, GeoEye, Earthstar Geographics, CNES/Airbus DS, USDA, USGS, AEX, Getmapping, Aerogrid, IGN, IGP, swisstopo, and the GIS user community; GCL Project Team, 2020.

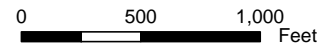
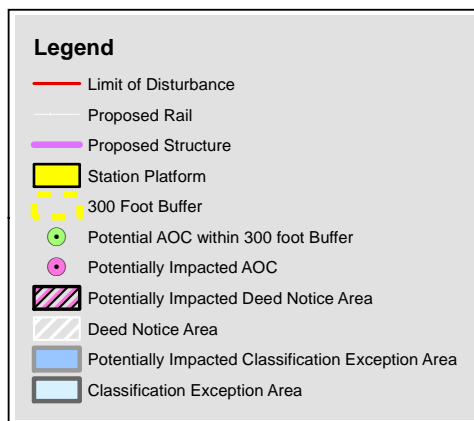
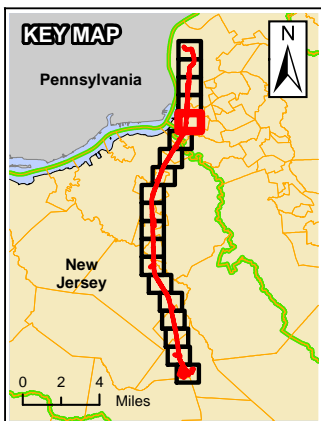
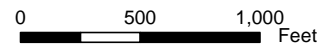
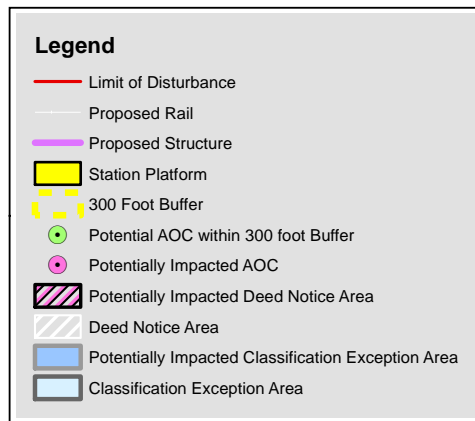
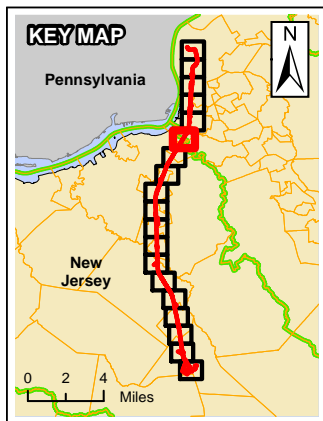




Figure 1g: Known or Potential Areas of Environmental Concern

Source: NJGID (2015); Esri, DigitalGlobe, GeoEye, Earthstar Geographics, CNES/Airbus DS, USDA, USGS, AEX, Getmapping, Aerogrid, IGN, IGP, swisstopo, and the GIS user community; GCL Project Team, 2020.



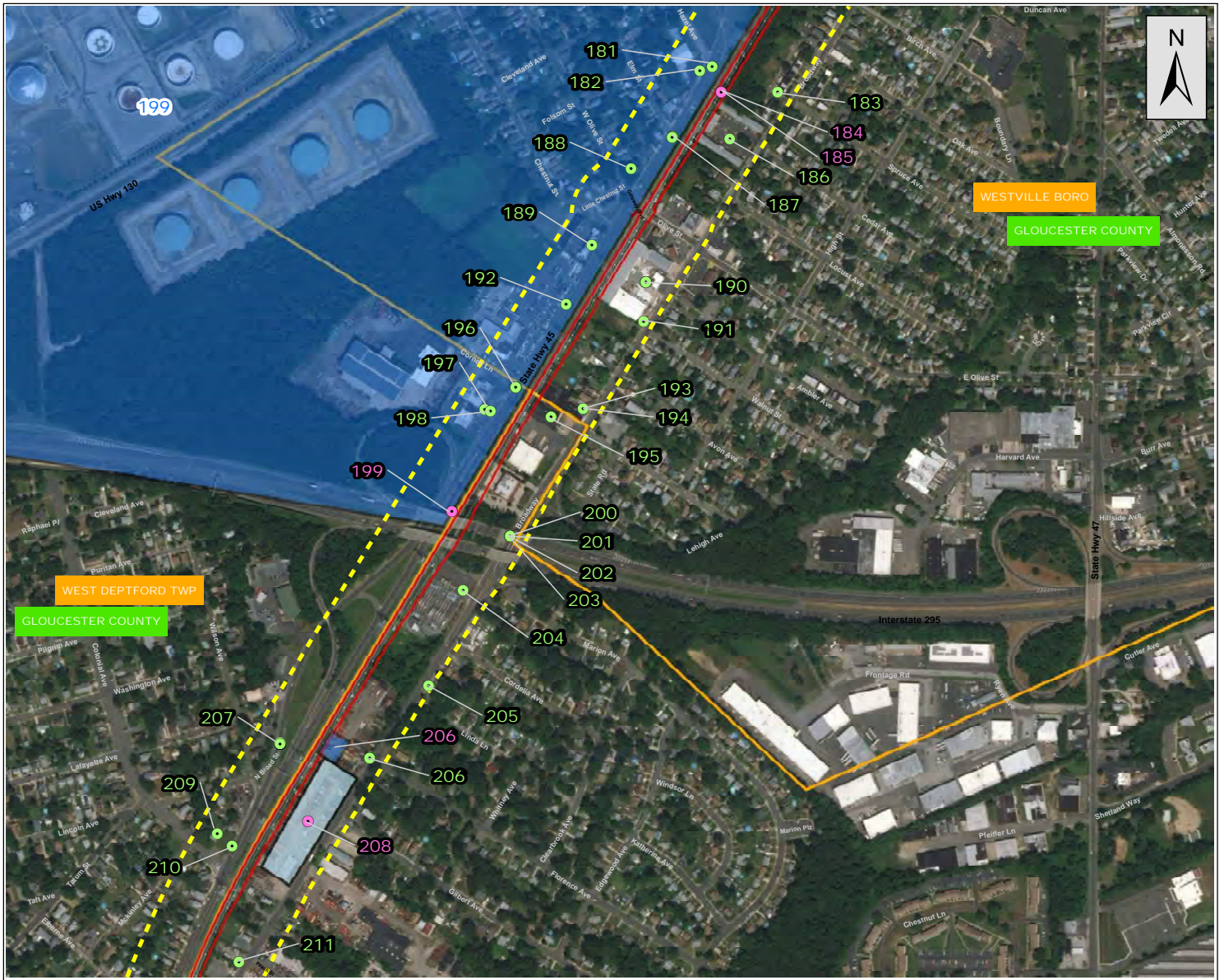


Figure 1h: Known or Potential Areas of Environmental Concern

Source: NJGID (2015); Esri, DigitalGlobe, GeoEye, Earthstar Geographics, CNES/Airbus DS, USDA, USGS, AEX, Getmapping, Aerogrid, IGN, IGP, swisstopo, and the GIS user community; GCL Project Team, 2020.

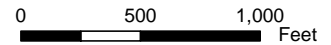
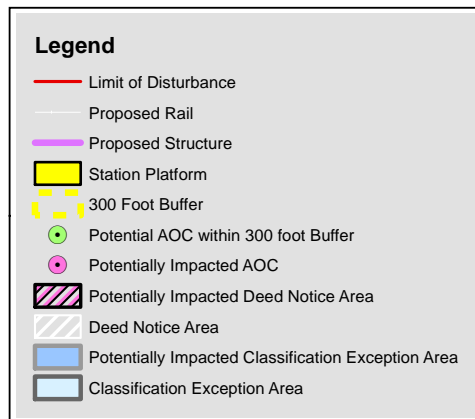
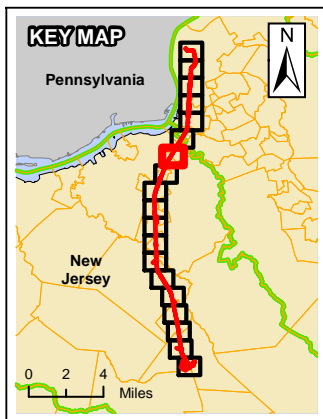
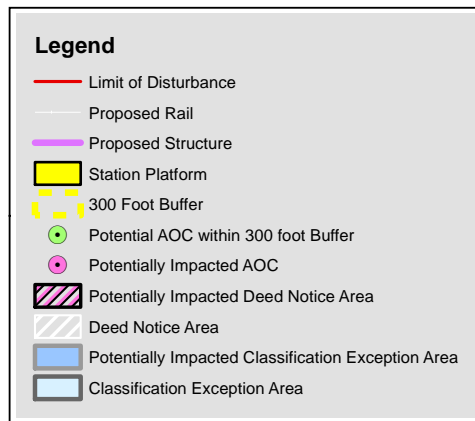
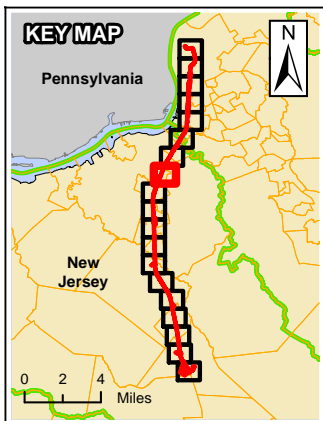




Figure 1i: Known or Potential Areas of Environmental Concern

Source: NJGID (2015); Esri, DigitalGlobe, GeoEye, Earthstar Geographics, CNES/Airbus DS, USDA, USGS, AEX, Getmapping, Aerogrid, IGN, IGP, swisstopo, and the GIS user community; GCL Project Team, 2020.



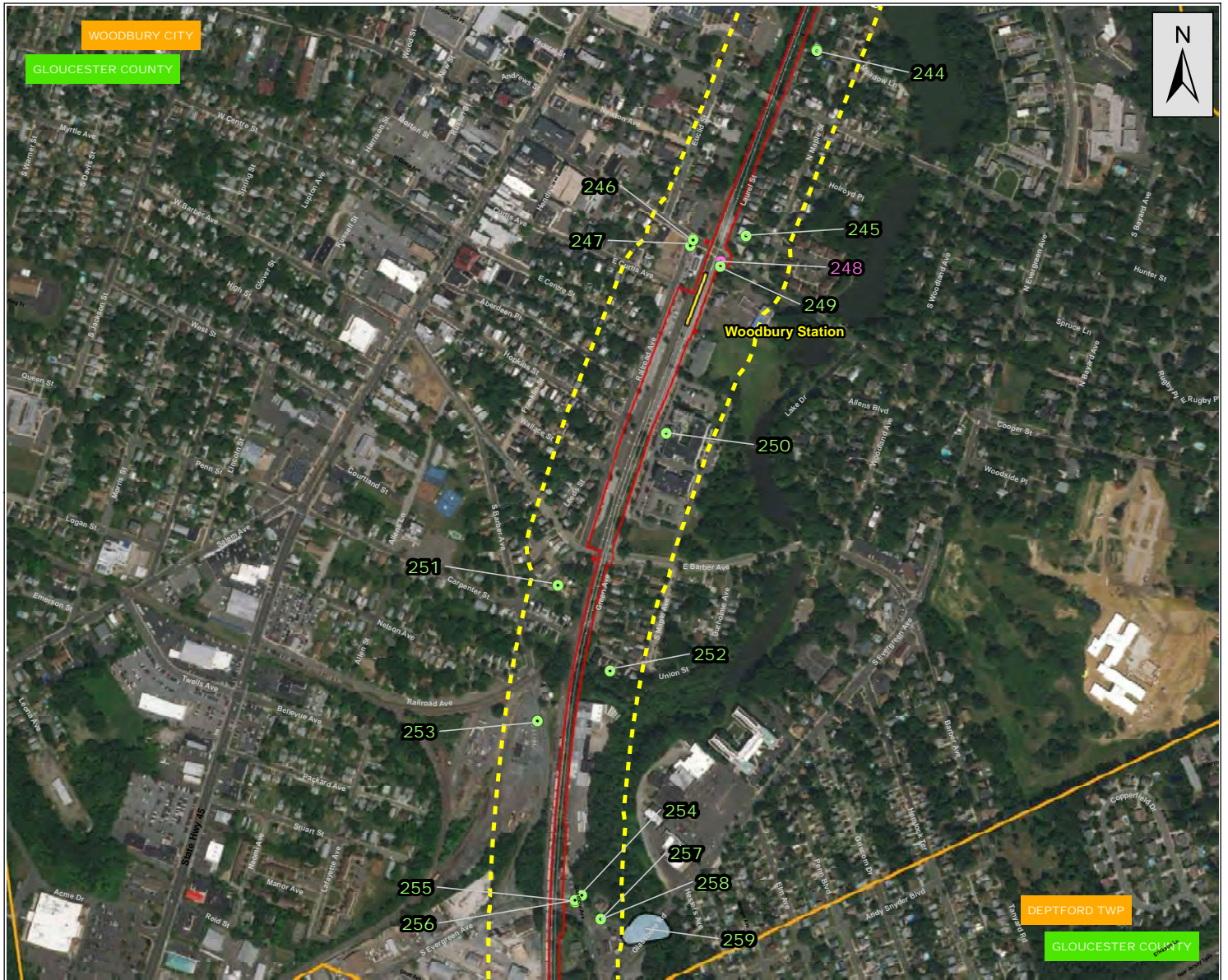


Figure 1j: Known or Potential Areas of Environmental Concern

Source: NJGID (2015); Esri, DigitalGlobe, GeoEye, Earthstar Geographics, CNES/Airbus DS, USDA, USGS, AEX, Getmapping, Aerogrid, IGN, IGP, swisstopo, and the GIS user community; GCL Project Team, 2020.

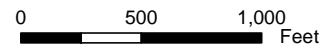
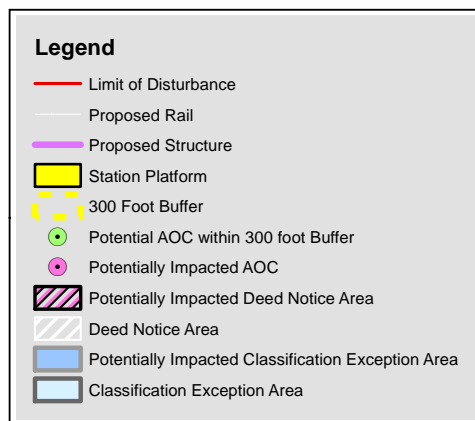
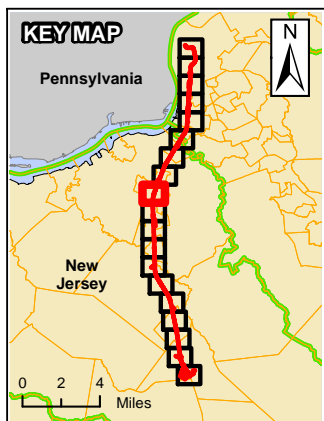
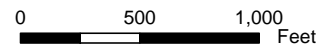
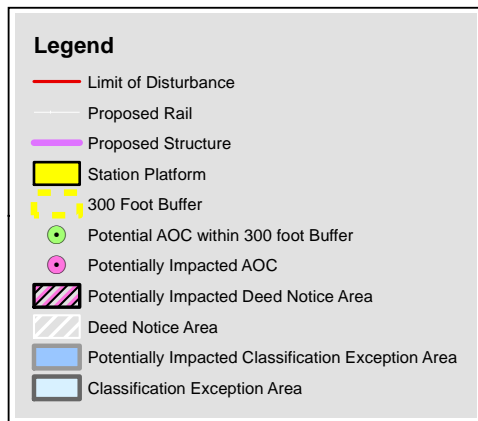
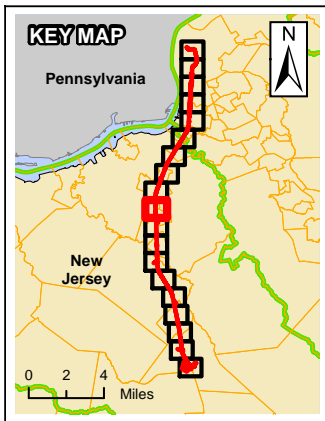




Figure 1k: Known or Potential Areas of Environmental Concern

Source: NJGID (2015); Esri, DigitalGlobe, GeoEye, Earthstar Geographics, CNES/Airbus DS, USDA, USGS, AEX, Getmapping, Aerogrid, IGN, IGP, swisstopo, and the GIS user community; GCL Project Team, 2020.



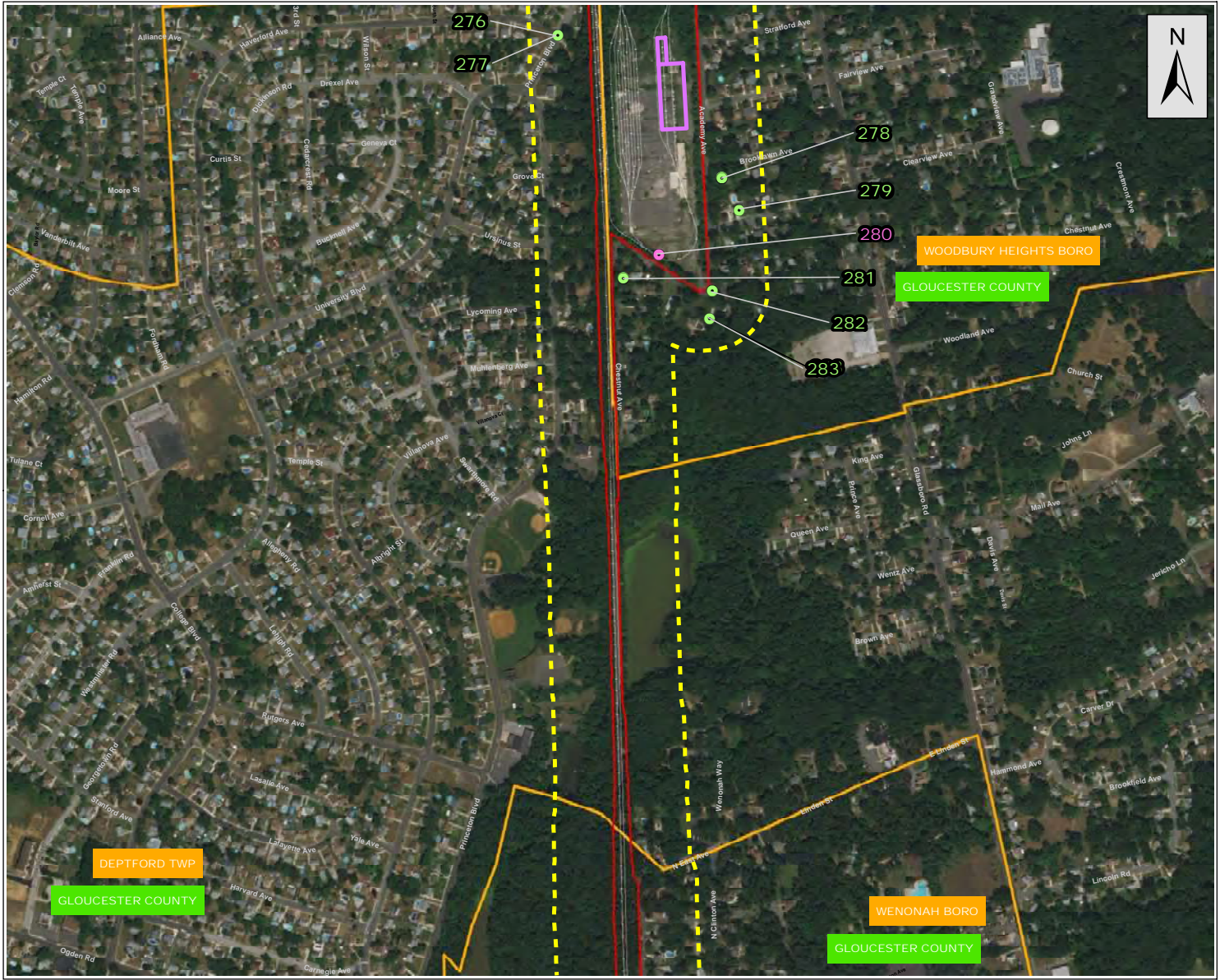
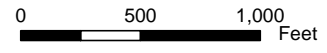
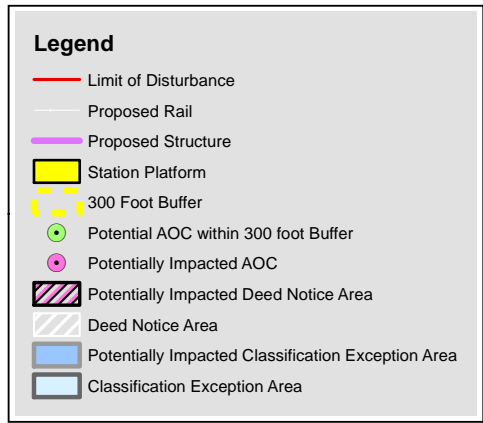
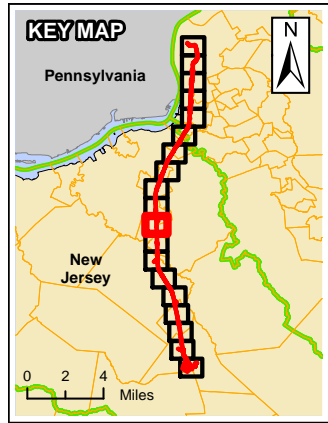


Figure 11: Known or Potential Areas of Environmental Concern

Source: NJGID (2015); Esri, DigitalGlobe, GeoEye, Earthstar Geographics, CNES/Airbus DS, USDA, USGS, AEX, Getmapping, Aerogrid, IGN, IGP, swisstopo, and the GIS user community; GCL Project Team, 2020.



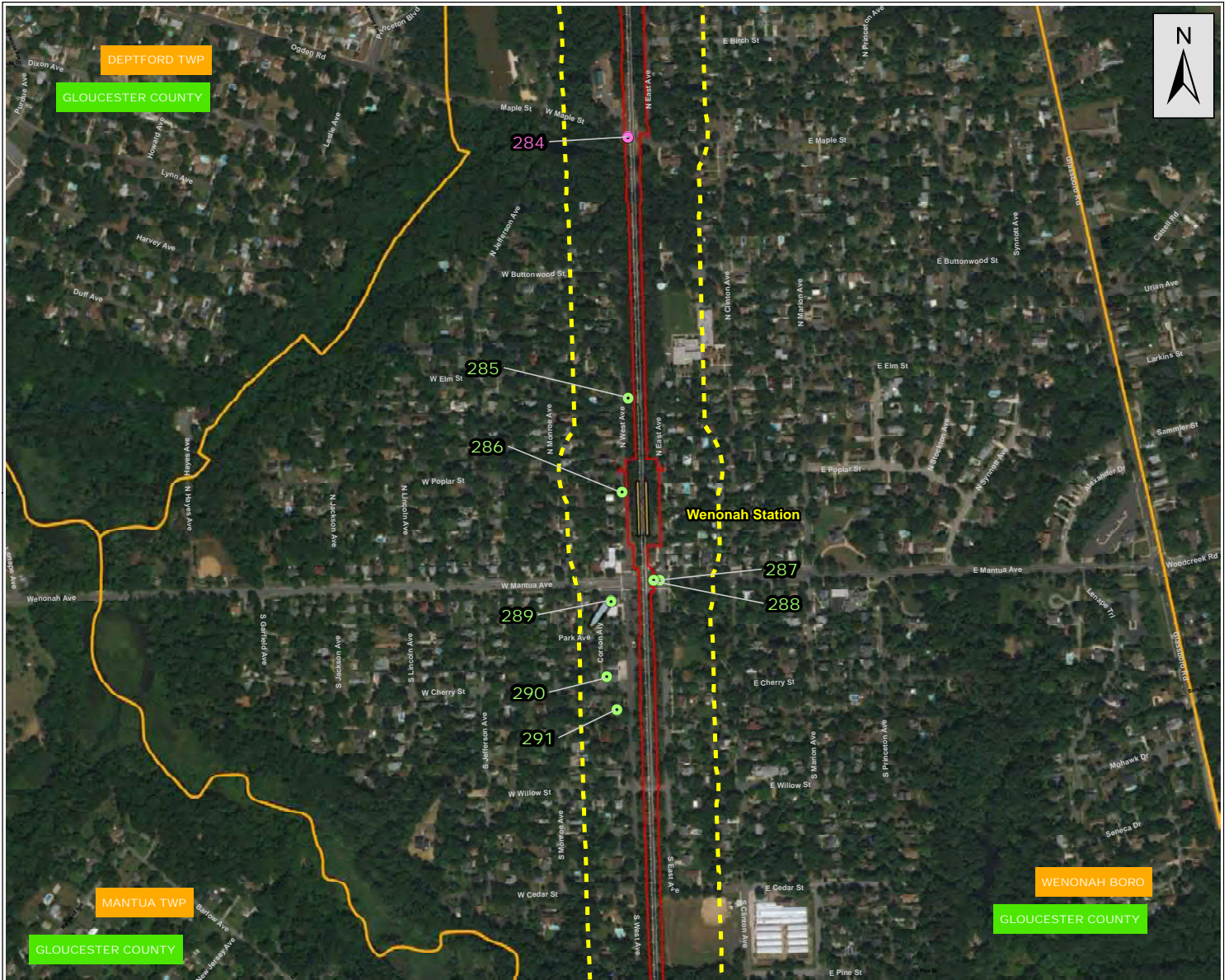
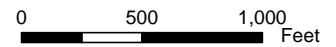
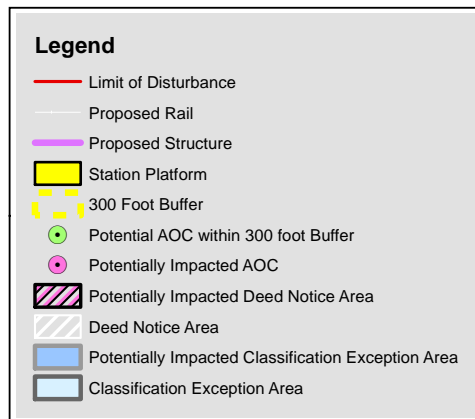
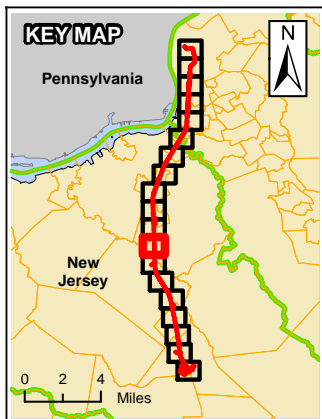


Figure 1m: Known or Potential Areas of Environmental Concern

Source: NJGID (2015); Esri, DigitalGlobe, GeoEye, Earthstar Geographics, CNES/Airbus DS, USDA, USGS, AEX, Getmapping, Aerogrid, IGN, IGP, swisstopo, and the GIS user community; GCL Project Team, 2020.



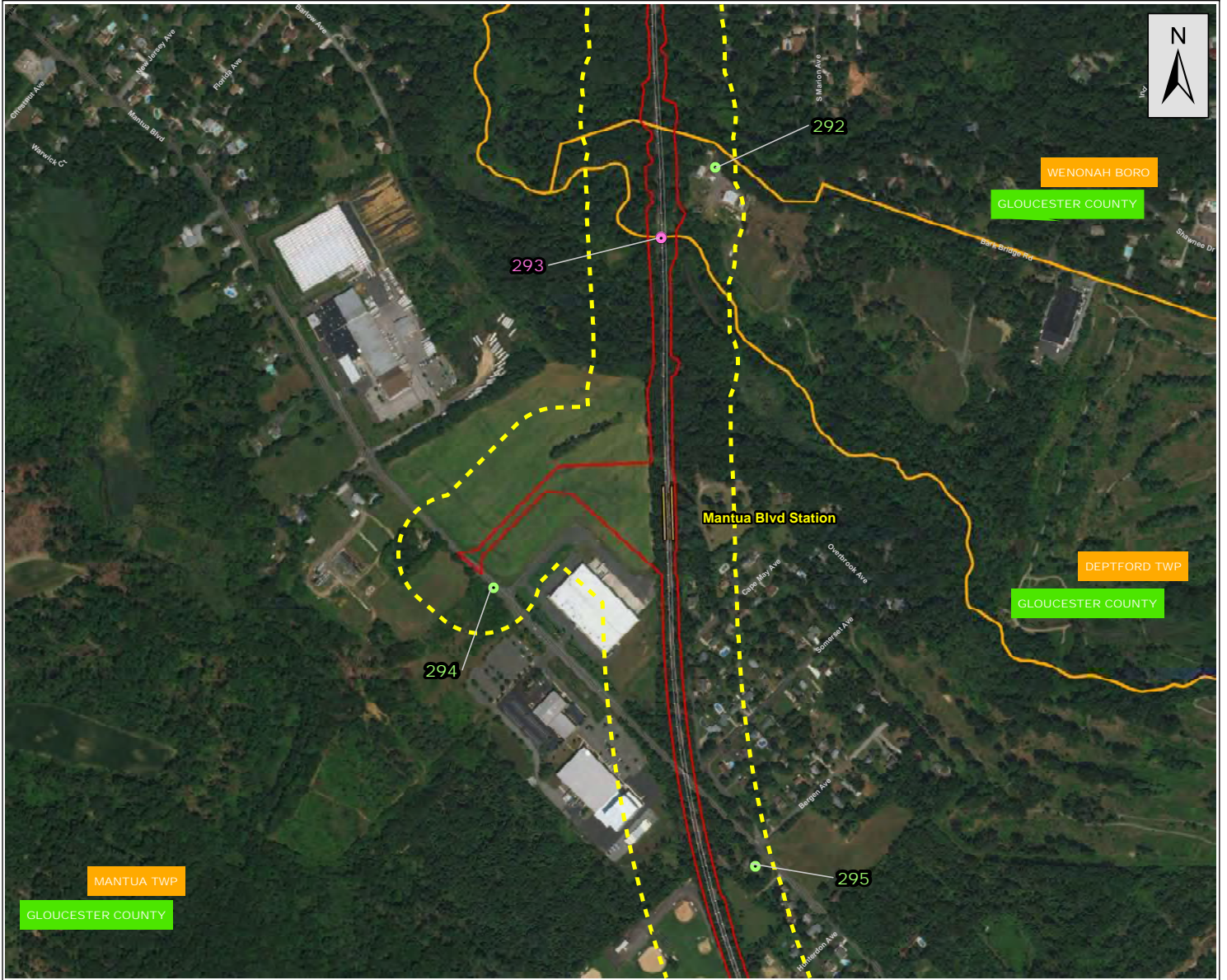


Figure 1n: Known or Potential Areas of Environmental Concern

Source: NJGID (2015); Esri, DigitalGlobe, GeoEye, Earthstar Geographics, CNES/Airbus DS, USDA, USGS, AEX, Getmapping, Aerogrid, IGN, IGP, swisstopo, and the GIS user community; GCL Project Team, 2020.

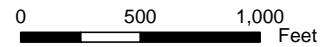
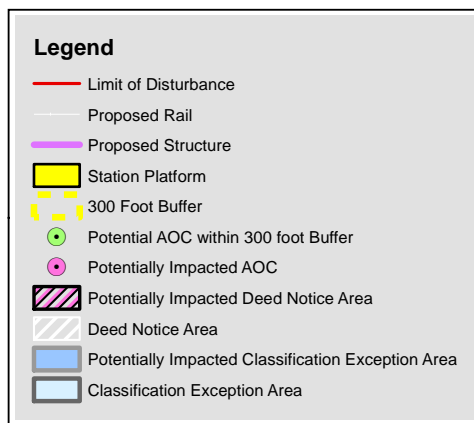
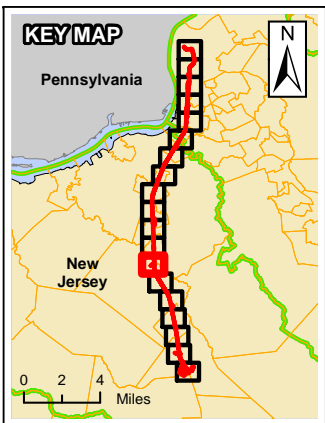
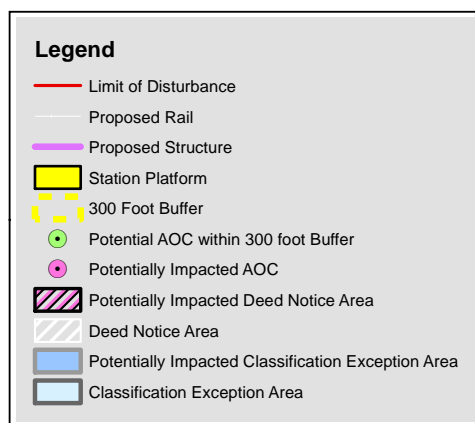
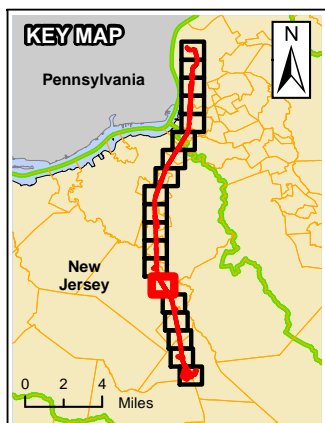




Figure 1o: Known or Potential Areas of Environmental Concern

Source: NJGID (2015); Esri, DigitalGlobe, GeoEye, Earthstar Geographics, CNES/Airbus DS, USDA, USGS, AEX, Getmapping, Aerogrid, IGN, IGP, swisstopo, and the GIS user community; GCL Project Team, 2020.



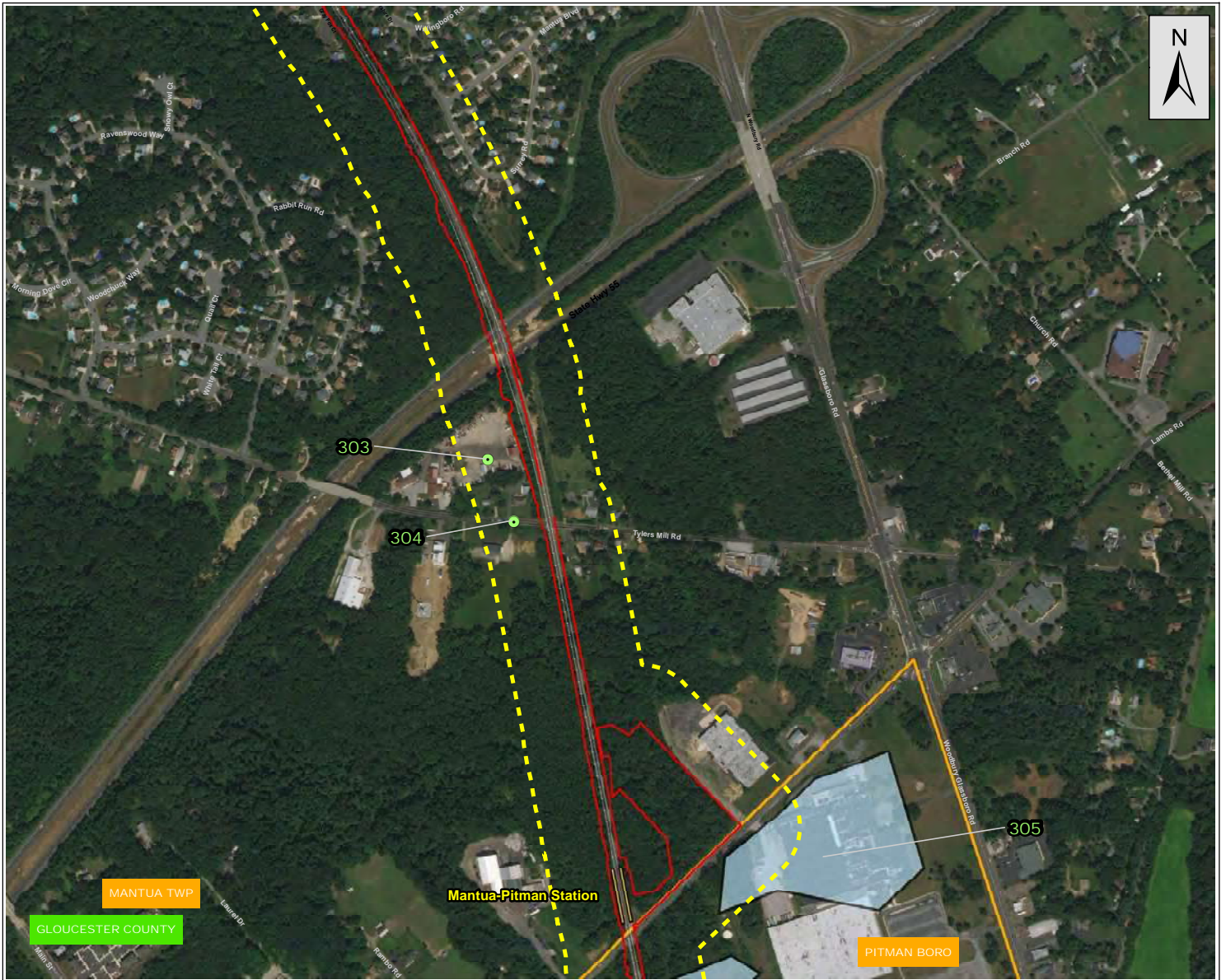


Figure 1p: Known or Potential Areas of Environmental Concern

Source: NJGID (2015); Esri, DigitalGlobe, GeoEye, Earthstar Geographics, CNES/Airbus DS, USDA, USGS, AEX, Getmapping, Aerogrid, IGN, IGP, swisstopo, and the GIS user community; GCL Project Team, 2020.

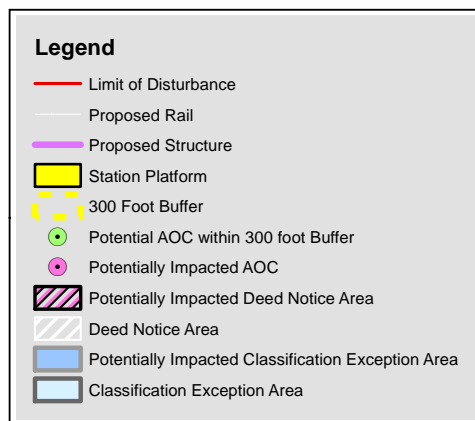
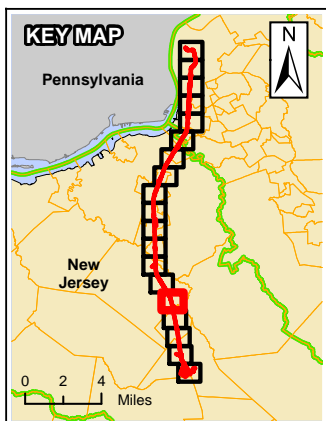




Figure 1q: Known or Potential Areas of Environmental Concern

Source: NJGID (2015); Esri, DigitalGlobe, GeoEye, Earthstar Geographics, CNES/Airbus DS, USDA, USGS, AEX, Getmapping, Aerogrid, IGN, IGP, swisstopo, and the GIS user community; GCL Project Team, 2020.

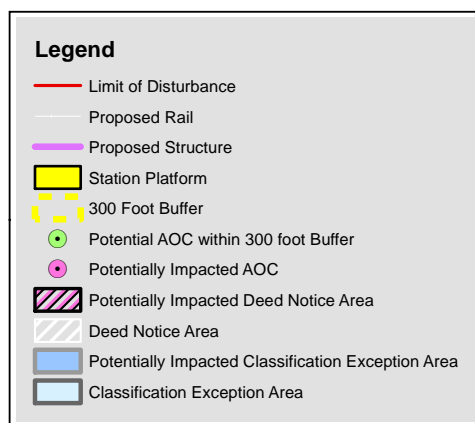
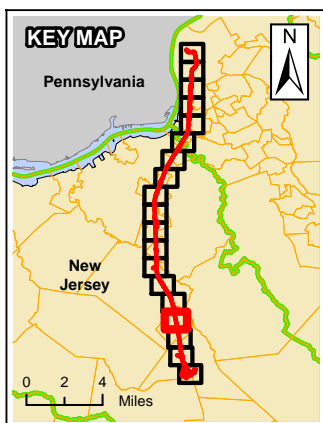




Figure 1r: Known or Potential Areas of Environmental Concern

Source: NJGID (2015); Esri, DigitalGlobe, GeoEye, Earthstar Geographics, CNES/Airbus DS, USDA, USGS, AEX, Getmapping, Aerogrid, IGN, IGP, swisstopo, and the GIS user community; GCL Project Team, 2020.

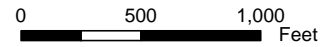
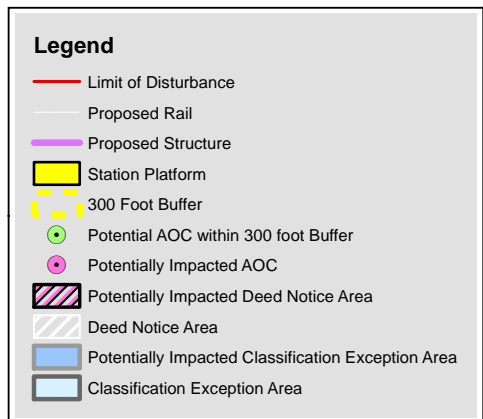
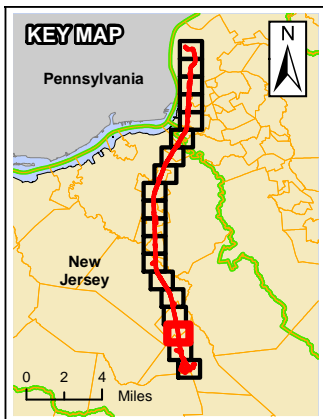
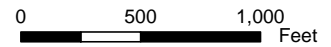
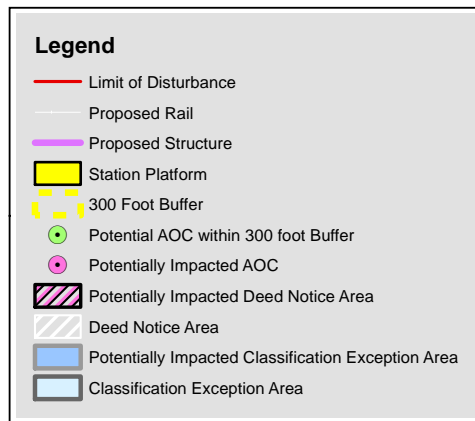
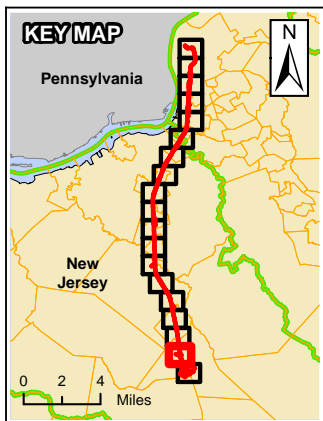




Figure 1s: Known or Potential Areas of Environmental Concern

Source: NJGID (2015); Esri, DigitalGlobe, GeoEye, Earthstar Geographics, CNES/Airbus DS, USDA, USGS, AEX, Getmapping, Aerogrid, IGN, IGP, swisstopo, and the GIS user community; GCL Project Team, 2020.



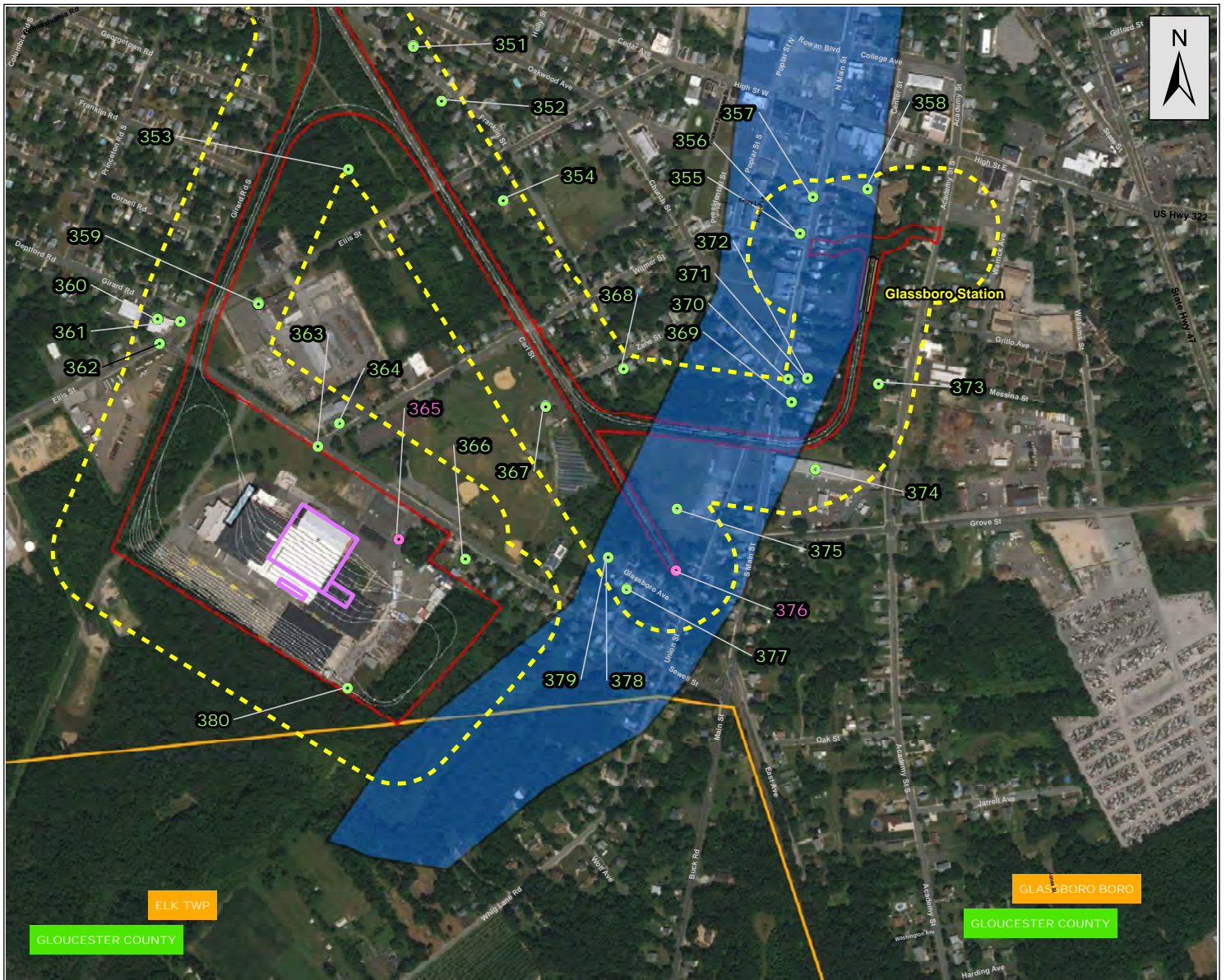
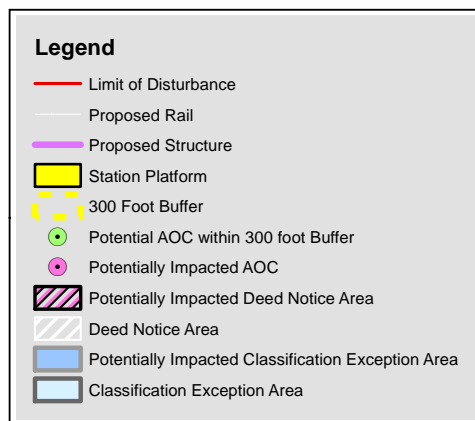
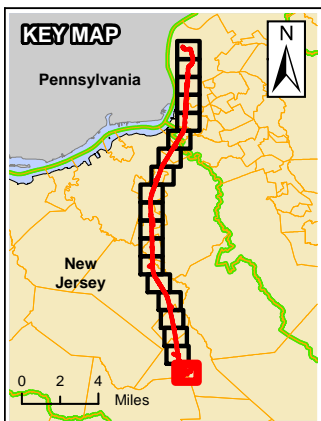


Figure 1t: Known or Potential Areas of Environmental Concern

Source: NJGID (2015); Esri, DigitalGlobe, GeoEye, Earthstar Geographics, CNES/Airbus DS, USDA, USGS, AEX, Getmapping, Aerogrid, IGN, IGP, swisstopo, and the GIS user community; GCL Project Team, 2020.



**Appendix 4-A: Complete Table of Known or Potential
Contaminated Sites Expected to be Impacted by the Proposed
Alignment**

Glassboro- Camden Line
Identified Contaminated Sites

Figure ID	Site Name	Database
1	NJ Transit River Line Right of Way Block 120 Lot 55	Deed Notice
2	NJ Transit River Line Right of Way Block 120 Lot 50	Deed Notice
3	NJ Transit River Line Right of Way Block 120 Lot 45	Deed Notice
4	Kinney Systems, Inc/ NJ TRANSIT River Line Camden County 4th St and Arch St, Camden, NJ	NJ Engineering Controls; FINDs; NJ SHWS
5	Rail Line Near N. 4th St/Arch St, Camden, NJ	NJ SPILLS
6	Brown Chas D/ Cutler Auto Body Service/ Wacker Service 407/ 411/ 421 Arch St, Camden, NJ	Hist Auto
7	NJ Transit River Line Right of Way Block 123 Lot 11	Deed Notice
8	Central Trust Co 401 Federal St, Camden, NJ	FINDS
9	PSE&G Transformer @ 6-8 South 4th Street Camden City, NJ	KCSL
10	Sing Lee B 425 Federal St, Camden, NJ	Hist Cleaner
11	NJ Transit River Line Right of Way Block 123 Lot 17	Deed Notice
12	South Jersey Gas Co 418 Federal St, Camden, NJ	NJ AIRS, NJEMS, FINDS
13	US Postal Service Former 420 424 Federal St, Camden, NJ	NJEMS, FINDS
14	Camden Insurance/ Camden Fire Insurance Building/ Camden Parking Authority/ Gas Station Former/ G & V Gulf Service/ Sylvias Restaurant/ Fifth & Federal Sts Parking Lot/ NJ TRANSIT River Line Camden County 430 Federal St/ 5th and Federal, Camden, NJ	FINDS, ECHO, US AIRS, Hist HWS, NJ Release, ACRES, US Brownfields, NJHWS Re-Eval, NJ Release, Hist Auto, Hist LUST, NJ UST, RGA HWS, NJ Brownfields; NJ SHWS, NJ UST, Hist LIST, NJ Engineering Controls, NJ NJEMS
15	Parkade Building 30 5th St, Camden, NJ	NJ Engineering Controls, NJ FINDS
16	Preisendanz Rud Sons/ Drive-it-Yourself of NJ 33-44 N 5th St/ 36th N 5th St, Camden, NJ	Hist Auto, Hist Cleaner
17	Camden Cnty Prosecutors Building 25 5th St, Camden, NJ	NJ Spills, NJ AIRS, FINDS
18	Rutgers- Camden Nursing and Science Bldg 530 Federal St, Camden City, NJ	NPDES, NJEMS, KCSL
19	Respond Inc Parkade 501 Federal St, Camden, NJ	FINDS, NJEMS
20	NJ Transit River Line Right of Way Block 175 Lot 17	Deed Notice
21	NJ Transit River Line Right of Way Block 175 Lot 12	Deed Notice
22	NJ Transit Building SE Corner 5th and Federal St, Camden, NJ	NJ Spills
23	In Area of/ A&D Landscaping/ Genesis School of Business Inc 519 Federal St, Camden, NJ	NJ Release, NJ NJEMS, FINDS
24	Doerschner S Dryers and Cleaners 512 Federal St, Camden, NJ	Hist Cleaner
25	12 Hudson St, Camden, NJ	NJ Release
26	Block N/Woolworth Site S 5th St, Camden, NJ	FINDS, US Brownfields

Glassboro- Camden Line
Identified Contaminated Sites

Figure ID	Site Name	Database
27	Honeyford & Smith Engineering Inc./ JE Brennenman & Co/ WHCB Real Estate LTD Partnership 800 Hudson Sq, Camden, NJ	NJ Spill, NJEMS, NJ SHWS, NJ LUST, NJ UST, NJ Inst Control, NJ Brownfields, GW Contaminated area, RCRA NonGen/NLR, FINDS
28	NJ Transit River Line Right of Way Block 175 Lot 12.01	Deed Notice
29	CVS Pharmacy #2399/ CVS Pharmacy 525 Martin Luther King Blvd/ 525 Mickle Blvd, Camden, NJ	RCRA-LQG, ECHO, NJ Manifest
30	Walter Rand Transportation Center/ NJ TRANSIT AUTH Bus Operations/ Mt Ephraim Ave/ Post Office 100 Broadway, Camden, NJ	NJ AIRS, ICIS, FINDS, NJEMS, Brownfields, ECHO
31	AWACS Inc Cell #14 130 Broadway, Camden, NJ	FINDS, NJEMS
32	201 Broadway, Camden, NJ	NJ Release
33	Center City Dry Cleaners/ Bryant Kim 200 S Broadway, Camden, NJ	NJEMS, RCRA NonGen/ NLR, EDR Hist Cleaner, FINDS, ECHO
34	On Roadway Broadway and Mickle, Camden, NJ	Hist HWS
35	Martin S Cleaners 555 Mickle Ave, Camden, NJ	EDR Hist Cleaners
36	Collins Harold M 591 Mickle Ave, Camden, NJ	EDR Hist Auto
37	Camden Office Building 101 Haddon Ave, Camden, NJ	US AIRS Minor, FINDS, NJEMS, ECHO
38	NJ Transit River Line Right of Way Block 1397 Lot 3 & 4	Deed Notice
39	Conroy Inc 126 Haddon Ave, Camden, NJ	NJEMS
40	Pressman Rosenberg Automotive/ Bartelt W Earle 130 Haddon Ave, Camden, NJ	NJEMS, Hist Auto
41	Mickle Boulevard & Haddon Avenue/ Sunrise Care & Rehabilitation for Southern NJ/ BH Camden Urban Renewal Mickle Blvd and Haddon Ave, Camden, NJ	NJ UST, NJ Spill, NJ Release, NJEMS, FINDS, NJ AIRS
42	NJ Transit River Line Right of Way Block 1448 Lot 20	Deed Notice
43	On Roadway Rt 676 and Mickle Blvd, Camden, NJ	NJ Spills
44	Cooper Health Systems- CCI 400 Haddon Ave, Camden City, NJ	KCSL
45	NJDOT Bin Rt I-676 MP 3.23 Bordentown, Camden, NJ	FINDS, ECHO
46	SL Electron Microscopy 3 Cooper Plaza, Camden, NJ	NJEMS, FINDS, HMIRS
47	Architect Props 351 Newton Ave/ 355 Newton Ave, Camden, NJ	NJ SHWS, US AIRS, ECHO, FINDS, RGA HWS
48	NJDOT BIN 0430152/ NJDOT BIN 0418153/ NJDOT BIN 0418154/ NJDOT BIN 0418163 Rt 676 MP 3.05 - Newton Ave Camden, NJ	RCRA NonGen/NLR
49	Cooper Plaza Historic Homes 443 Haddon Ave, Camden, NJ	NJEMS, ECHO, FINDS, RCRA NonGen/ NLR
50	Parcel S1 Discount Liquor 470 E Newton Rd, Camden, NJ	NJ Spills
51	Orlow Robt 499 Newton Ave, Camden, NJ	Hist Cleaner

Glassboro- Camden Line
Identified Contaminated Sites

Figure ID	Site Name	Database
52	Wintheim Murray 549 Haddon Ave, Camden, NJ	Hist Gasoline Service Station
53	Morris Jack 565 Haddon Ave	Hist Auto
54	542 Trenton Ave, Camden, NJ	NJ Release
55	Cooper Ferry Development Assoc Newton Ave and Mt Ephraim Ave, Camden, NJ	NJEMS
56	3CS Towing and Recovery 552 Trenton Ave, Camden, NJ	FINDS, NJEMS
57	Haddon Ave and Mt Ephraim Ave, Camden, NJ	NJEMS
58	Lewandowski Raymond 701 Haddon Ave, Camden, NJ	Hist Auto
59	Erick Industries Inc 827 829 9th St, Camden, NJ	FINDS, NJ ISRA, NJEMS
60	Peerless Garage 965 S 9th St, Camden, NJ	Hist Auto
61	King Lee 827 Walnut, Camden, NJ	EDR Hist Cleaners
62	Davis Clarence 826 Walnut, Camden, NJ	EDR Hist Cleaners
63	Spender Fred D 821 Mt Vernon St, Camden, NJ	Hist Auto
64	Mt Vernon Garage 814 Mt Vernon ST, Camden, NJ	Hist Auto
65	815 Chesnut St, Camden, NJ	NJ Release
66	Tom S Valet Services 813 Chestnut St, Camden, NJ	EDR Hist Cleaners
67	Vacant Lots 825-827-829 Chestnut, Camden, NJ	NJ Release
68	Loyal Cleaners and Dryers 900 Chestnut St, Camden, NJ	EDR Hist Cleaners
69	Money Oil Service 9th and Chesnut, Camden, NJ	NJ Spills
70	8th and Chesnut St, Camden, NJ	NJ Release
71	Spencer Alf D 825 Sycamore, Camden, NJ	Hist Auto
72	831 Kaighn Ave, Camden, NJ	RGA LUST, SHWS, FINDS
73	NJDOT BIN 0418161 RT 676 MP 2.55 Kaighn Ave, Camden, NJ	RCRA NonGen/NLR
74	St Bartholomew Catholic School 751 Kaighns Ave, Camden, NJ	NJEMS, FINDS
75	Elkins Cleaners and Dyers Inc 747 Kaighn Ave, Camden, NJ	EDR Hist Cleaners
76	CWS Industries, INC 726-C Kaighn Ave, Camden, NJ	KCSL, EDR
77	SL Surface Technologies, Inc 1416 S 6th St, Camden City, NJ	KCSL

Glassboro- Camden Line
Identified Contaminated Sites

Figure ID	Site Name	Database
78	NJDOT Interstate 676 and Atlantic Ave RT 676 MP 2.26 Atlantic Ave, Camden, NJ	FINDS
79	Jersey Core Supply Co, Inc 635 Jackson St, Camden, NJ	RCRA NonGen/NLR, FINDS, US AIRS, ECHO
80	6th St and Jackson, Camden, NJ	NJ Release
81	600 Jackson St, Camden, NJ	NJ Spills
82	Village of Hope Phase 2 Project 2 Carl Miller Blvd and 6th St, Camden City, NJ	KCSL, RGA HWS, FINDS, NJEMS
83	1722-34 South 6th Street, Camden, NJ	US Brownfields
84	Fillmore St. Housing- WS0007 1615-1635 South 6th St, Camden, NJ	NJ BROWNFIELDS
85	Clement Coverall Company Former/ Van Hook Street Site 619 Carl Miller Blvd, Camden, NJ	KCSL, SHWS, NJ Hist HWS, RCRA-TSDF, NJ Brownfields, NJ Release, NJEMS, FINDS
86	Mickle Elementary School 6th and Van Hook St, Camden, NJ	NJ UST, FINDS
87	Camden City Bd of Ed 1701 S 6th St, Camden, NJ	NJ AIRS, FINDS, NJEMS
88	DA Whiteman Co 1712 S 6th St, Camden, NJ	NJEMS, FINDS
89	600 Block Van Hook, Camden, NJ	NJ Spills
90	Turps Waste Material 1747 Master St, Camden, NJ	FINDS, US AIRS, ECHO
91	Camden City Redevelopment Agency WS0012 New Homes 6th St Railroad Ave, Camden City, NJ	KCSL, NJEMS
92	Colonial Processing Camden, NJ	FINDS
93	Conrail Corp Ferry Ave and Salem St, Camden, NJ	FINDS
94	622 Ferry St, Camden, NJ	ERMS
95	Shulnick Jos 643 Ferry Ave, Camden, NJ	Hist Cleaner
96	Camden City MUA 645 Ferry Ave, Camden, NJ	NJ Release
97	Chelton Ave and Masters St Camden, NJ	NJ Spills
98	Camden Cogeneration Facility/ Camden Plant Holding 522 Chelton Ave, Camden, NJ	Deed Notice, CEA, KCSL
99	Morgan Village Master St and Woodland Ave, Camden, NJ	Deed Notice
100	South 6th St @ Woodland Ave Drums S 6th St Woodland Ave, Camden, NJ	KCSL
101	Camden Waterfront South WS0015 Woodland and Lest Aves, Camden City, NJ	KCSL
102	Aruvil International Inc 2431 S 6th St, Camden, NJ	NJEMS, FINDS
103	Lehigh Cement Co/ Camden Grancem Facility/ Essroc Cement Corp/ St. Lawrence Cement 595 Morgan Blvd, Camden NJ	NJ Release, NJEMS, NJPDES, NJ AIRS

Glassboro- Camden Line
Identified Contaminated Sites

Figure ID	Site Name	Database
104	Sandy Bernknopf 6th St and Morgan Blvd, Camden, NJ	NJ Spills, NJEMS, FINDS
105	Simkins David 681 Morgan Blvd, Camden, NJ	EDR Hist Auto
106	7th and Morgan Auto Repair Shop 693 Morgan St, Camden, NJ	EDR Hist Auto
107	Camden Energy Res 600 Morgan Blvd, Camden, NJ	KCSL, NJ Release, NJ Spills, Hist LUST
108	Air Products and Chemicals Inc 2710 Broadway, Camden City, NJ	KCSL
109	Indco Inc 511 Essex St, Gloucester, NJ	KCSL, SHWS, NJ Hist HWS, RCRA-TSDF, NJ Brownfields, NJ Release
110	Collings Ave and Essex St, Gloucester, NJ	NJ Spills, NJ Release
111	822-830 Essex St, Gloucester, NJ	NJ Release
112	215 Washington Ave, Gloucester, NJ	NJ Spills
113	206 N Fillmore St, Gloucester, NJ	NJ Release
114	Broadway School Broadway near Mercer St, Gloucester, NJ	NJ UST
115	Rail Line From Essex St to Mercer St, Gloucester, NJ	NJ Spills
116	503 Middlesex St, Gloucester, NJ	NJ Spills
117	Residence of 815 Middlesex St, Gloucester, NJ	NJ Spills
118	136 Indiana Ave, Gloucester, NJ	NJ Release
119	Healthy Smiles of Gloucester City 535 Monmouth St, Gloucester, NJ	NJEMS, FINDS
120	Johnson Herman 26 Champion Rd, Gloucester, NJ	EDR Hist Auto
121	Smith Residence, 24 South Railroad Ave, Gloucester, NJ	NJ Release
122	Cumberland St 701 Cumberland St, Gloucester, NJ	NJ BROWNFIELDS
123	East Coast Waste Services Inc 775 Market St, Gloucester, NJ	NJEMS, FINDS
124	Roadway 800 Cumberland St, Gloucester City, NJ	NJ Spills, NJ Release
125	159 South Filmore St, Gloucester, NJ	NJ Spills
126	JPI Assoc Inc 725 Market St, Gloucester, NJ	NJEMS, FINDS
127	Bus Transmission Services Inc 731 Market St, Gloucester, NJ	EDR Hist Auto
128	740 Market St, Gloucester, NJ	NJ Spills

Glassboro- Camden Line
Identified Contaminated Sites

Figure ID	Site Name	Database
129	Red Lion Insulation 136 Washington Ave, Gloucester, NJ	NJ Spills
130	S F Pedrick Const Co Inc 800 Market St, Gloucester City, NJ	NJ UST, SHWS, Hist LUST
131	CC Landscaping 750 Market St, Gloucester, NJ	NJEMS, FINDS
132	824 Market St, Gloucester, NJ	NJ Release
133	Intersection of Broadway and Hunter, Gloucester, NJ	NJ Spills
134	Residence 850 Powell St, Gloucester, NJ	NJ Release
135	Residence of 911 George St, Gloucester, NJ	NJ Spills
136	Gloucester Elderly Housing Assocs LLC/ Carpenters Square/ Lightman Motors Inc 430 South Broadway, Gloucester, NJ	NJ Release, NJ RGA HWS, RCRA-CESQG, NY Manifest, FINDS, NJ SHWS, NJ UST, NJEMS, EDR Hist Auto, ECHO, VCP
137	South Jersey Automatic Laundry 456 S Broadway, Gloucester, NJ	EDR Hist Cleaners
138	2 E. Thompson Ave, Gloucester, NJ	NJ Spills
139	Dwyn Char Inc 518 South Broadway, Gloucester, NJ	EDR Hist Cleaners
140	Rutter Howard 558 S Broadway, Gloucester, NJ	EDR Hist Auto
141	Liquid Carbonic Speciality Gas Corp/ Praxair Inc/ Woodland Oxygen Co Inc 560 S Broadway, Gloucester City, NJ	KCSL, UST, NJEMS, NJ SHWS, NJ HIST HWS, NJ Brownfields, FINDS, ECHO, NJ RGA HWS
142	Southwind Development Co Blackhouse Pk, Gloucester, NJ	NJEMS, FINDS
143	610 New Broadway Bridge, Brooklawn, NJ	NJ Release
144	East Coast Assemblies 609 New Broadway, Brooklawn, NJ	EDR Hist Auto, FINDS, RCRA NonGen/ NLR, ECHO, NJEMS
145	505 New Broadway, Brooklawn, NJ	NJ Release, NJEMS, FINDS
146	Dantes Auto Body/ HI Tech Auto Repair 502 New Broadway, Brooklawn, NJ	RCRA NonGen/ NLR, NJ Release, FINDS, ECHO, NJEMS
147	Roadway 19 Lynn Drive, Brooklawn, NJ	SHWS
148	Roadway 11 Lynn Drive, Brooklawn, NJ	NJ Release
149	30 Railroad Ave, Brooklawn, NJ	SHWS
150	FASGO Inc Browning Rd and Rt 130, Brooklawn, NJ	FINDS, ECHO, ICIS, US AIRS
151	South Jersey Container Corporation 267 New Freedom New Brooklyn, Brooklawn, NJ	NJ HWS Re-Eval
152	112 South New Broadway, Brooklawn, NJ	NJ Spills
153	Brooklawn Dry Cleaners 104 New Broadway, Brooklawn, NJ	EDR Hist Cleaners

Glassboro- Camden Line
Identified Contaminated Sites

Figure ID	Site Name	Database
154	D'Andrea Tire Inc/ Reader John L 100 New Broadway, Brooklawn, NJ	CEA, KCSSL, EDR Hist Auto
155	112 North Wilson Ave, Brooklawn, NJ	NJ Release
156	Borough of Brooklawn Water Works 101 South Broadway, Brooklawn, NJ	CEA
157	C&L Machining Co Inc 110 New Broadway, Brooklawn, NJ	NJEMS
158	114 S New Broadway, Brooklawn, NJ	NJ Release
159	NJDOT RT 130 Brooklawn Circle Pedestrian Improvements Rt 130 and 551, Brooklawn, NJ	NJEMS, FINDS
160	Camden Cnty DPW New Broadway, Brooklawn, NJ	NJEMS
161	Hess Service Station #30522 342 Brooklawn Cir, Crescent Blvd, Brooklawn, NJ	CEA, KCSSL
162	Conrail Corp @ Millers Highlife Marina 39 River Dr, Westville Boro, NJ	NJEMS, FINDS
163	Westville Boro DPW/ Westville Municipal Garage 114 Crown Point Rd, Westville Boro, NJ	NJEMS, FINDS, CEA, KCSSL
164	Continental Baking Company 45 Gateway Blvd, Westville, NJ	FINDS, ECHO, RCRA NonGen/NLR, NJ SHWS, NJ UST, NJEMS, NJ RGA HWS
165	Kuncas Enterprises Inc 26 Gateway Blvd, Westville, NJ	NJEMS
166	Southeast Landscape Service 26 Station Ave, Westville, NJ	NJEMS
167	Rons Tailors and Dry Cleaners 124 Broadway, Westville, NJ	EDR Hist Cleaners
168	Baylock Fuel Oil Corp 200 Gateway Blvd, Westville, NJ	NJEMS, FINDS
169	J Fletcher Creamer and Sons Rt 130 and Rt 145, Westville, NJ	FINDS
170	Westville Fire Department Broadway and Center St PO BOX 151, Westville, NJ	NJ Hist LUST
171	First Presbyterian Church of Pitman 305 Broadway, Pitman, NJ	NJEMS
172	Rons Service Station/ Murphy James J 326 Broadway, Westville, NJ	EDR Hist Auto, NJ SHWS, NJ HIST LUST, NJ UST, NJ RGA HWS, FINDS, NJ Release, NJ NJEMS
173	CAMCO Paving 324 Broadway, Westville, NJ	NJ Release
174	Westville Laundro Cleaners Inc 315 Broadway, Westville, NJ	EDR Hist Cleaners
175	P&B Manufacturing Co Frontage Rd and Delsea Dr, Westville, NJ	RCRA NonGen/NLR
176	Garment Bar Co Inc Frontage Ind Park Bldg T, Westville, NJ	NJEMS, FINDS
177	US Postal Service 349 Broadway, Westville Boro, NJ	NJEMS, FINDS
178	Empty Lot Rt 45 and Park Ave, Westville, NJ	NJ Spills
179	Gateway Blvd and Park Ave, Westville Boro, NJ	NJ Release

Glassboro- Camden Line
Identified Contaminated Sites

Figure ID	Site Name	Database
180	500 Rt 45, Westville Boro, NJ	NJ Spills
181	Shutes Motor Transportation Gateway Blvd and Hazel Ave, Westville Boro, NJ	KCSL, UST, FINDS, NJEMS
182	Shute Bat-A-Rama 600 Gateway Blvd, Westville Boro, NJ	NJ Release, NJ Spills
183	626 Broadway, Westville, NJ	NJ Release
184	Sunoco Gas Station Rt 46 and Roosevelt, Westville, NJ	NJ Spills
185	Wheelabrator 600 US 130, West Deptford Twp, NJ	NJ Release
186	712 Broadway, Westville, NJ	NJ Release
187	Decker's Mobil Service/ AMOCO Service Station Gateway Blvd at Elm St, Westville Boro, NJ	SHWS, NJ AIRS, NJEMS, FINDS, UST
188	215 West Olive St, Westville, NJ	NJ Release
189	910 Gateway Blvd, Westville, NJ	NJ Release
190	Thermal Tire 912 Broadway, Westville, NJ	NJEMS, FINDS, NJ UST, NJ Release
191	Main Street Mantua Investments LLC 1000 1010 Broadway, Westville, NJ	KCSL
192	Sport Chevrolet 1000 Gateway Blvd, Westville, NJ	NJ RGA HWS
193	B A Auto Service Rt 47 and 295, Westville, NJ	FINDS, ECHO
194	Lee Industries Inc Ryan Ave, Westville, NJ	FINDS, ECHO
195	Ten- Forty Corp/ Eco Tech Coatings Inc/ Melville Industries 1040 Broadway, West Deptford, NJ	NJ RGA HWS, NJ SHWS, UST, NJ Release, RCRA NonGen/ NLR, FINDS, ECHO, NJ HIST LUST, FINDS, NJ NJEMS
196	Family Dollar Store #6078 1100 Gateway Blvd, Westville, NJ	RCRA-CESQC
198	Pelligrino Chevrolet 1000 Gateate Blvd RT 45, Westville, NJ	NJ Spills, RCRA NonGen/NLR, NJ SHWS, NJ HIST LUST, UST, US AIRS, NJ Release, NJ AIRS, NJEMS
198	Norgetown Cleaners RT 45 Gateway Shopping Center, West Deptford, NJ	FINDS, ECHO
199	Coastal Eagle Point Oil Co/ Texaco Eagle Point Route 130 and Interstate 295, West Deptford, NJ/ Route 130, Westville, NJ	CEA, NJ SWF/LF, NJ HIST LUST, NJ SWF/LF, NJPDES, FINDS, ECHO, NJ Release, NJ Spills
200	James Matteo and Son Incorporated 1708 Rt 130, West Deptford, NJ	NJ Hist HWS, NJ UST, NJPDES
201	John Van Houghton Trucking MVA/ Riggins Transport MVA I-295 MM 23.3, West Deptford, NJ	FINDS
202	Information Technology Solutions I-295 Business Ctr Suite Q1, West Deptford, NJ	FINDS, ECHO
203	New Jersey American Inc I-295 Ind Park Building B234, West Deptford, NJ	FINDS, ECHO
204	PSE&G Deptford Substation Broadway and Cordelia Ave, West Deptford, NJ	NJEMS, FINDS

Glassboro- Camden Line
Identified Contaminated Sites

Figure ID	Site Name	Database
205	Broadway Garage 1085 Broadway, West Deptford, NJ	KCSL
206	Woodbury Fuel & Supply Co 1090, 1096 and 1108/ Old Broadway and Florence Ave, West Deptford, NJ	CEA, KCSL, NJ VCP, NJ UST, NJ Release, NJ GW Cont Areas, FINDS, NJ SHWS, NJ Inst Controls, NJ Brownfields, NJEMS
207	Getty Service Station/ Brinkman Bros RT 45 and Lincoln Ave, West Deptford/ Lincoln Ave & Rt 45, Woodbury, NJ	NJ Release, EDR Hist Auto, FINDS, ECHO
208	Cornell & Company Inc 1150 Broadway, Westville, NJ	CEA, KCSL
209	Residence 10 Colonial Ave, West Deptford, NJ	FINDS
210	Getty Service Station # 56260 1415 Gateway Blvd, West Deptford, NJ	NJ Release
211	Paradise Construction Corp 1501 Old Broadway, West Deptford, NJ	FINDS, ECHO
212	In front of residence at 18 Elbern Ave, West Deptford, NJ	NJ Spills
213	Ball and Buckley 1301 N Broad St, West Deptford, NJ	NJ Spill, FINDS
214	655 Creek Road LLC 1229 Broadway, Deptford, NJ	NJ UST, FINDS, NJ LUST, NJ Release, NJEMS
215	Custom Business Systems Inc Broadway and N Evergreen, West Deptford, NJ	FINDS, NJ Brownfields, NJ SHWS, NJEMS
216	PSE&G Deptford Substation Upgrades 1070 Broadway, West Deptford, NJ	FINDS
217	La Pollos Auto Parts 1500 Old Broadway, West Deptford, NJ	NJ RGA HWS, NJ Release, NJ Spills
218	Grove Avenue Realty Urban Renewal Corp Grove Ave, West Deptford, NJ	NJEMS, FINDS, NJ Spills
219	Pancoast Boat Sales 1225 N Broad St, West Deptford, NJ	NJ Inst Control, FINDS, NJ Hist LUST, NJ UST, NJ Release, NJ VCP
220	1201 North Broad St, West Deptford, NJ	FINDS, NJEMS
221	Autozone 1119 N Broad St, West Deptford, NJ	FINDS, NJEMS, NJ SHWS, NJ Hist HWS
222	Pep Boys 1137 South Broad Street, Woodbury, NJ	NJ Hist LUST
223	Tri Fund 1055 N Broad St, Woodbury, NJ	FINDS
224	Residence 120 Park Ave, Woodbury, NJ	NJ Spills
225	Tri Fund 1047 N Broad St, Woodbury, NJ	RCRA NonGen/NLR, FINDS, ECHO
226	On Roadway N Broad St and Park Ave, Woodbury, NJ	NJ Spills
227	Minuteman Press 1002 S Broad St, Woodbury, NJ	NJEMS, NJ Spills
228	Garden State Fuels 958 N Broad St, Woodbury City, NJ	KCSL, NJ RGA HWS, NJ RGA LUST, FINDS, NJ Release
229	Huntsman Polypropylene Corp Woodbury Plant, Woodbury, NJ	ICIS, FINDS, ECHO

Glassboro- Camden Line
Identified Contaminated Sites

Figure ID	Site Name	Database
230	Heads Archo Service N Broad St and Edith Ave, Woodbury, NJ	EDR Hist Auto
231	Getty Petroleum Corp 1415 Gateway Blvd, Woodbury, NJ	NJ Release
232	Shell Service Station 846 N Broad St, Woodbury City, NJ	CEA, KCSL, EDR, RCRA NonGen/NLR, FINDS, ECHO
233	832 Rt 45, Woodbury, NJ	NJ Spills
234	Sals Cleaners 830 N Broad St, Suite 1, Woodbury, NJ	EDR Hist Cleaners, FINDS
235	22 Dare St, Woodbury, NJ	NJ Spills
236	Boggs Auto Rebuilders Inc 658 Green St, Woodbury, NJ	RCRA, NJEMS, FINDS
237	McDaniels Resident 510 Washington Ave, Woodbury, NJ	NJ Spills
238	A to Z Builders Square 132 E Red Bank Ave, Woodbury, NJ	FINDS
239	Luv N Joy Dare Care 546 Green St, Woodbury, NJ	NJEMS, FINDS
240	PSE&G Woodbury Substation Red Bank Ave, Woodbury, NJ	NJEMS
241	CVS Pharmacy #0228 25 E Red Bank Ave, Woodbury, NJ	RCRA-LQG, NJ Release, NJ MANIFEST, FINDS, ECHO, PA MANIFEST
242	PSE&G Woodbury Southern Project Various Locations, Woodbury, NJ	NJEMS, FINDS
243	Woodbury City Coal Gas/ PSE&G Woodbury Gas Work Site Maple St and Laurel St, Woodbury, NJ	Deed Notice, KCSL, NJ SHWS, NJ Eng Controls, NJ Brownfields, NJEMS, RCRA NonGen/ NLR, NJ RGA HWS, EDR MGP, FINDS, ECHO
244	JL Patterson 132 Laurel St, Woodbury, NJ	NJEMS, FINDS
245	16 Laurel St, Woodbury, NJ	NJ Release
246	Colonial Pipeline Co R O W Vermont Ave and Cooper St, Woodbury, NJ	RCRA NonGen/NLR
247	Conrail Glassboro M N Repair Shop Cooper St and Railroad Ave, Woodbury, NJ	FINDS, ECHO
248	Deptford Twp Mun Blvd 101 Cooper St, Woodbury, NJ	NJ UST, NJ Spill
249	Catholic School Services/ Catholic Welfare Bureau 8 Green Ave, Woodbury, NJ	NJ Release, NJ UST, FINDS
250	Forway Industries Inc, Green Avenue Redevelopment 112 180 184 Green Ave, Woodbury, NJ	ISRA, NJPES, NJ VCP, NJEMS, RCRA NonGen/ NLR, FINDS, ECHO, NJ SHWS, NJ RGA HWS
251	Woodbury Well 9 216 Railroad Ave, Woodbury, NJ	NJ AIRS, FINDS
252	119 Union Ave, Woodbury NJ	NJ Release
253	Conrail Corp 455 S Barber St, Woodbury, NJ	RCRA NonGen/NLR, FINDS, ECHO, NJEMS
254	144 Glassboro Rd, Woodbury, NJ	NJ Spills
255	Mortons Citgo 139 N Glassboro Rd, Woodbury, NJ	EDR Hist Auto

Glassboro- Camden Line
Identified Contaminated Sites

Figure ID	Site Name	Database
256	Woodbury Heights DPW Yard 145 N Glassboro Rd, Woodbury, NJ	NJ Spill, FINDS
257	1755 Glassboro Road, Woodbury, NJ	NJ SHWS
258	Maple Ridge Gibg 1717 Glassboro Rd, Woodbury, NJ	NJEMS
259	Shell Service Station #138557 537 S Evergreen Ave, Woodbury, NJ	CEA
260	Gray Fox Animal Hospital 207 Glassboro Rd, Woodbury, NJ	NJEMS, FINDS
261	Madden Construction and Roofing W Jersey Ave and Gantt Ave, Woodbury, NJ	NJEMS, FINDS
262	Excel Color Graphics Inc 207 W Jersey Ave, Woodbury Heights, NJ	NJEMS, FINDS
263	Chrysler Jeep of Woodbury 241 N Glassboro Rd, Woodbury Heights, NJ	NJEMS, FINDS
264	Adams Technical Maintenance, 489 Redwood Ave, Woodbury Heights, NJ	FINDS, ECHO, RCRA NonGen/ NLR, NJEMS, NJ Hist LUST, NJ Release
265	GLR Construction Redwood Ave, Woodbury Heights, NJ	NJEMS, FINDS
266	Railroad Tracks along West Jersey Ave and Redwood Ave, Woodbury Heights, NJ	NJ Spills
267	Pops Ground Maintenance 381 W Jersey Ave, Woodbury Heights, NJ	FINDS
268	Intersection of West Jersey Ave and Holly Ave, Woodbury Heights, NJ	NJ Release
269	Shell Service Station #129499 (Former) 501 Elm Ave, Woodbury Heights Boro, NJ	CEA, KCSL
270	Woodbury Heights Coal Goal 500 Elm Ave, Woodbury Heights, NJ	EDR MGP
271	In area of West Jersey St and Elm St, Woodbury Heights, NJ	NJ Release
272	457 Central Ave, Woodbury Heights, NJ	NJ Spills
273	448 Central Ave Apartments, Woodbury Heights, NJ	FINDS, NJ SHWS, NJ Hist HWS, NJ VCP, NJEMS,
274	Residence 715 West Jersey Ave/ Oak Ave and West Jersey,, Woodbury Heights, NJ	NJ VCP, FINDS, NJEMS, NJ Spills
275	450 Linden Ave, Woodbury Heights, NJ	NJ SHWS, NJ Release
276	In the area of 405 Princeton Blvd, Woodbury Heights, NJ	NJ Release
277	Deptford Twp Well #1 Princeton Blvd and Haverford Ave, Woodbury Heights, NJ	FINDS
278	600 Brooklawn Ave, Woodbury Heights, NJ	NJ Release
279	Hertlein Enterprises Inc 605 Clearview Ave, Woodbury Heights, NJ	EDR Hist Auto
280	BPG Development Co 523 Chesnut Ave, Woodbury Heights, NJ	FINDS, NJEMS
281	Masonite Dor Fab 500 Chestnut St, Woodbury Heights, NJ	FINDS

Glassboro- Camden Line
Identified Contaminated Sites

Figure ID	Site Name	Database
282	Hertz Penske Truck Leasing Inc/ Middle Atlantic Millwork Co Academy and Chestnut St, Woodbury Heights, NJ	RCRA, FINDS, NJ UST, NJEMS, ECHO
283	Corp Landscape Spec 588 Academy Ave, Woodbury Heights, NJ	NJEMS
284	Wenonah Boro/ Wenonah Boro DPW 2 W Maple S, Wenonah, NJ	NJEMS, FINDS, NJ Hist LUST, RCRA NonGen/NLR
285	Vineland Electric 211 North West, Wenonah, NJ	NJ Release
286	100 West Avenue, Wenonah Boro, NJ	KCSL
287	Wenonah Train Station E Mantua Ave and N East Ave, Wenonah, NJ	NJEMS, FINDS
288	Enright and Sons Mantua Ave, Wenonah, NJ	NJEMS, FINDS
289	Cumberland Farms/ Cumberland Farms 2913/ Wenonah Cumberland Farms Wenonah and West Ave/2 W Mantua Ave/ Mantua and West Aves , Wenonah, NJ	Inst Controls, NJ VCP, NJEMS, NJ SHWS, NJ Brownfields, RCRA NonGen/NLR, NJ LUST, NJ UST, CEA, KCSL
290	Wenonah Boro Water Dept 1 S West Ave/ 1 West Cherry S, Wenonah, NJ	NJ AIRS, FINDS, ECHO, NJEMS
291	Vacant Residence 100 S West Ave, Wenonah, NJ	NJ VCP, NJ Spills
292	West Jersey Biological Supply Barkbridge Rd Cor of S Marion, Wenonah, NJ	FINDS
293	Conrail Corp Trestle Replacement UG Bridge 12.22, Deptford, NJ	NJEMS, FINDS
294	Howarthe Greenhouse Incorporated 577 Mantua Blvd, Mantua, NJ	NJ SHWS
295	Chew Jesse 611 Mantua Blvd, Mantua, NJ	NJEMS, FINDS
296	740 East Atlantic Ave, Mantua, NJ	NJ Release
297	Summit Ridge Major Subdivision Sussex Ave, Mantua Twp, NJ	NJEMS
298	Sewell Train Station 780 Atlantic Ave, Mantua Twp, NJ	NJ VCP, NJEMS
299	Conrail Corp Atlantic Ave, Mantua, NJ	NJEMS
300	Ledden Palimeno Landscaping and Maintenance/ Sweeney Seed Co 195 Center Ave, Mantua, NJ	NJEMS, FINDS, ECHO, RCRA NonGen/NLR, Hist FTTS, FTTS
301	Conrail Corp Center Ave, Mantua, NJ	NJEMS
302	Small Wonders Academy/ Pools & Spas by Van Brill, Renal Center of Sewell, TLC Cleaners Store #18, Inspirar Imaging Center Mantua 660 Woodbury Glassboro Rd, Mantua, NJ	NJ AIRS, FINDS
303	Tyler Mill Towing 387 Tyers Mill Rd, Mantua, NJ	NJEMS, FINDS, US AIRS, ECHO
304	Eaise Kevin 374 Tylers Mill Road, Mantua, NJ	FINDS
305	CBS Records 440 Woodbury Rd and Lams Rd, Pitman Boro, NJ	CEA
306	Penn-Jersey Building Material Co 300 Esplandade Ave, Pitman, NJ	NJ AIRS, NJEMS, FINDS, RCRA NonGen/NLR, NJ Hist LUST

Glassboro- Camden Line
Identified Contaminated Sites

Figure ID	Site Name	Database
307	Rt Gougon Siding and Roofing 158 Kerton, Pitman, NJ	NJEMS, FINDS, NJPDES, ECHO
308	400 Montgomery Ave, Pitman, NJ	NJ Release
309	John Wilson Residence 235 Woodland Ave, Pitman, NJ	NJ Release
310	HF Lenahan Assoc Inc Summit Ave, Pitman, NJ	NJEMS, FINDS
311	Ronald Mark Associates North Summit Ave, Pitman, NJ	NJEMS, FINDS, NJ AIRS, ECHO
312	Residence 22 North Summit Ave, Pitman, NJ	NJ Release
313	72 East Holly Ave, Pitman, NJ	NJ Release, NJ RGA HWS, NJEMS, NJSHWS, FINDS
314	Review Printing Co 53 Pitman Ave, Pitman, NJ	NJ Release
315	Timberline Cold Storage Inc 55 Commerce Ave, Pitman, NJ	NJEMS, FINDS
316	George's Autobody 75 Commerce Ave, Pitman, NJ	RCRA NonGen/NLR, FINDS, ECHO, US AIRS, NJEMS
317	The Water Ice Co 54 Pitman Ave, Pitman, NJ	FINDS, NJ Spills, NJ Release, NJEMS, NJ RGA HWS, NJ SHWS
318	Robert Deangelo Heating 51 Pitman Ave, Pitman, NJ	NJ Release, FINDS, NJ Spills, NJEMS
319	Davis One Hour Cleaners 113 W Jersey Ave, Pitman, NJ	Hist Cleaner
320	Jodi Scott Dress Co 107 W Jersey Ave, Pitman, NJ	NJ ISRA, NJEMS, FINDS
321	Hospital Environmental Services Inc 8 Pitman Ave, Pitman, NJ	FINDS, NJEMS, ECHO
322	Haddon Orthodontics PC 134 S Broadway, Pitman, NJ	NJEMS, FINDS
323	Logo Logix Corp 140 S Broadway, Pitman, NJ	NJEMS, FINDS
324	150 S Broadway, Pitman, NJ	NJ Release
325	Kitchens of Distinction 245 S Broadway, Pitman, NJ	NJEMS, FINDS, NJ Release
326	Owens William S Broadway and W Jersey Ave, Pitman, NJ	EDR Hist Auto
327	First Presbyterian Church of Pitman 305 Broadway, Pitman, NJ	NJEMS, NJ Hist LUST, NJ UST
328	Broadway Cleaners and Formals, Inc 308 S Broadway, Pitman, NJ	FINDS, US AIRS, ECHO, EDR Hist Cleaner, NJEMS
329	349 W Jersey Ave, Pitman, NJ	NJEMS, FINDS, NJ VCP, NJ RGA HWS, NJ Release
330	Atlantic City Electric Co 445 Boulevard Ave, Pitman, NJ	NJEMS, FINDS
331	26 Bellevue Ave, Pitman, NJ	NJ VCP, NJ SHWS, FINDS, NJEMS, NJ Release, NJ RGA
332	502 Blvd, Pitman, NJ	NJ Spills

Glassboro- Camden Line
Identified Contaminated Sites

Figure ID	Site Name	Database
333	Alcyon Boulevard Drainage Improvements Alcyon Blvd, Pitman, NJ	NJ NJEMS, FINDS
334	846 Park Ave, Glassboro, NJ	NJ VCP
335	15 Central Ave, Glassboro, NJ	FINDS
336	Thomas E Bowe Elementary School 7 Mancuso Ln, Glassboro, NJ	FINDS, NJ NJEMS
337	806 Carpenter St, Glassboro, NJ	NJ Release
338	Brookside Recreation Club Carpenter St, Glassboro, NJ	NJ NJEMS, FINDS
339	Glassboro High School Bowe Blvd, Glassboro, NJ	NJ Release, NJ AIRS
340	The Crossing at Glassboro 515 Mullica Hill Rd, Glassboro, NJ	NJ SHWS, NJ SPILLS, NJ Release
341	Roadway Rt 322 and Lehigh Ave, Glassboro, NJ	NJ Release
342	Turner Wood Dental 500 Mullica Hill Rd, Glassboro, NJ	FINDS, NJ NJEMS
343	Wawa Rt 322 and Bowe Blvd, Glassboro, NJ	NJ Spills
344	US Rt 322 and Heston, Glassboro, NJ	NJ Spills
345	Area of Landfill Off Rt 322, Glassboro, NJ	NJ Release
346	Well #4 Heston Rd, Glassboro, NJ	NJ UST
347	Intersection of Rt 33 and Yale Road, Glassboro, NJ	NJ Release
348	On Roadway US RT 322/ Girard Road, Glassboor, NJ	NJ Spill
349	301 Mulica Hill Rd, Glassboro Boro, NJ	NJ Release
350	Glassboro State College/ Rowan University Rt 322,/ Ellis St Glassboro, NJ	NJ Release, NJ Spill, NJ Hist Cleaners, FINDS
351	224 Laurel Ave, Glassboro, NJ	NJ RGA HWS, FINDS, NJ SPILLS, NJVCP, NJEMS
352	217 Laurel St, Glassboro, NJ	NJ release
353	Rowan University Ellis Street, Glassboro, NJ	KCSL
354	NJ Bell Telephone Co Rt 322, Glassboro, NJ	FINDS, ECHO
355	Glassboro Child Development Centers 35 S Main Street, Glassboor, NJ	FINDS, NJEMS
356	De Persia Property 36 South Main St, Glassboro, NJ	NJ Release
357	Manninos Service 25 S Main St, Glassboro, NJ	Hist Auto, NJ UST, NJ NJEMS
358	20 S Main Street, Glassboro, NJ	KCSL

Glassboro- Camden Line
Identified Contaminated Sites

Figure ID	Site Name	Database
359	Atlantic Electric Co 428 Ellis St, Glassboro, NJ	NJ Release, RCRA-CESQC, NJ SHWS, NJ LUST, NJ UST, NJ MANIFEST, NJ SPILLS, NJ AIRS
360	Advanced Welding Services 8 Deptford Rd, Glassboro, NJ	FINDS
361	Ron Son Mushroom Products Ellis Mill Rd and Deptford Rd, Glassboro, NJ	NJ BROWNFIELDS
362	SW Downer JR Co/ Downer Co Inc, Castellini Environmental Services/ South Jersey Gas Co Ellis and Sewell Streets, Glassboro, NJ	NJ AIRS, NJ UST, RCRA NonGen. NLR, FINDS, ECHO, NJEMS
363	Roadway-High, Ellis, Poplar Sewell and Wilmer Sts, Glassboro, NJ	NJ Spills
364	301 Wilmer St, Glassboro, NJ	NJ Release
365	Owens-Illinois, Inc/ Anchor Hocking Packaging Co/ New Centruy Transp 70 Sewell St/ Glassboro Closure Plant, Glassboro Boro, NJ	CEA, KCSL, NJ UST, RGA HWS, SHWS, NJ INST Control, Brownfields, ISRA, AIRS, NJ GW Contam Areas, RCRA NonGen/ NLR, NJ HIST LUST, NY MANIFEST, NJ Spills, NJ Release, NJEMS, FINDS, ECHO
366	56 Sewell St, Glassboro, NJ	NJ Release
367	Well #5 Zane St and Carl St, Glassboro, NJ	NJ UST
368	30 Zone St, Glassboro, NJ	NJ Release
369	Nickerson Charles E 132 S Main St, Glassboro, NJ	EDR Hist Auto
370	Terwin Auto Center 129 S Main St, Glassboro, NJ	KCSL
371	Former South Jersey Gas Site Union St, Glassboro, NJ	NJ release
373	57 South Academy St, Glassboro, NJ	NJ Release
372	Bowers Auto Main St, Glassboro, NJ	NJ Release
374	South Jersey Gas Yard/ Penske Truck Leasing Co/ Area of Tar Pit/ Glassboro Coal Gas 142 Main St/ Zane and Union Sts, Glassboro, NJ	NJ SHWS, NJ AIRS, NJEMS, FINDS, ECHO, RCRA-LQG, NJ HIST HWS, NJ UST, NJ MANIFEST, RCRA NonGen/ NLR, NJ Release, PA Release, NJ RGA LUST, NJ SPILLS, PA Manifest, EDR MGP
375	South Jersey Gas Co 103 Union St, Glassboro, NJ	KCSL
376	South Jersey Gas - Glassboro Zane St and Union St, Glassboro, NJ	CEA
377	10 Glassboro Ave, Glassboro, NJ	NJ Release
378	ATTIS 1773 Glassboro Williamstown Rd, Glassboro, NJ	NJ SHWS, NJ NJEMS
379	Harleco Metalizing Corp 201 Glassboro Rd, Glassboro, NJ	NJ Spills
380	Glassboro Boro Falcon Ave, Glassboro, NJ	NJ NJEMS, FINDS

**Appendix 4-B: EDR Report
(Available Upon Request)**